

# Alabama

## Labor Market Information News

### Table of Contents

Economic Brief	1
LMI Definitions	2
Consumer Price Index	6
Current Employment Statistics	
Employment	3-5, 7-14
Hours and Earnings	6
Local Area Unemployment Statistics	15-19
Release Schedule	20
Technical Support	20



**April 2024  
Publication**

### Economic Brief

Alabama's seasonally adjusted labor force participation rate, at 57.4 percent in March, was unchanged from the February revised rate and was higher than 57.0 percent recorded a year ago. The civilian labor force was 2,331,680 in March, compared to 2,327,989 in February 2024 and 2,291,783 in March 2023.

The similar national labor force participation rate for March, at 62.7 percent, was higher than the 62.5 percent reported the prior month and 62.6 percent recorded a year ago.

The State's seasonally adjusted unemployment rate, at 3.0 percent in March, was unchanged from the February revised rate of 3.0 percent and was higher than the 2.3 percent recorded a year ago. March's rate represented 70,894 unemployed persons, compared to 69,057 in February 2024 and 52,332 in March 2023.

The comparable national unemployment rate for March, at 3.8 percent, was lower than the February 2024 revised rate of 3.9 percent and was higher than the year ago rate of 3.5 percent.

	Not Seasonally Adjusted			Seasonally Adjusted		
	Mar p 2024	Feb r 2024	Mar r 2023	Mar p 2024	Feb r 2024	Mar r 2023
Civilian Labor Force <sup>1</sup>	2,343,059	2,316,439	2,292,002	2,331,680	2,327,989	2,291,783
Employment	2,272,173	2,237,458	2,241,553	2,260,786	2,258,932	2,239,451
Unemployment	70,886	78,981	50,449	70,894	69,057	52,332
AL Unemployment Rate	3.0	3.4	2.2	3.0	3.0	2.3
AL Labor Force Participation Rate	57.7	57.1	57.0	57.4	57.4	57.0
U.S. Unemployment Rate	3.9	4.2	3.6	3.8	3.9	3.5
U.S. Labor Force Participation Rate	62.7	62.5	62.6	62.7	62.5	62.6
Wage and Salary Employment <sup>2</sup>	2,187,200	2,181,900	2,148,300	2,191,100	2,186,500	2,155,100

<sup>1</sup> Place of residence basis. <sup>2</sup> Preliminary. <sup>3</sup> Revised.

Estimates prepared by the Alabama Department of Labor in cooperation with the Bureau of Labor Statistics, based on a 2023 benchmark.

Alabama's not seasonally adjusted wage and salary employment, totaling 2,187,200 in March, increased 5,300 over the month. Employment gains occurred in government (+2,400), leisure and hospitality (+2,400), manufacturing (+1,300), other services (+600), private education and health services (+600), and information (+200). Employment losses were in professional and business services (-1,000); trade, transportation, and utilities (-800); financial activities (-300); and mining and logging (-100). The employment level was unchanged within construction.

Over the past twelve months, total nonagricultural wage and salary employment increased by 38,900. Annual gains were in private education and health services (+10,500); government (+9,300); manufacturing (+7,200); trade, transportation, and utilities (+4,800); construction (+4,100); other services (+2,700); information (+600); and leisure and hospitality (+200). Annual losses were in mining and logging (-300), professional and business services (-100), and financial activities (-100).

# LMI Definitions

American Community Survey (ACS): The ACS is an ongoing survey that provides data every year by giving communities the current information they need to plan investments and services. Information from the survey generates data that help determine how more than \$400 billion in federal and state funds are distributed each year.

Bureau of Labor Statistics (BLS): The Bureau is a division of the U.S. Department of Labor and functions as the principal data gathering agency of the federal government in the field of labor economics. The BLS collects, processes, analyzes and disseminates data relating to employment, unemployment, the labor force, productivity, prices, family expenditures, wages, industrial relations, and occupational safety and health.

Census Tract: A small relatively permanent statistical subdivision of a county delineated by local committees of census data users for the purpose of collecting and presenting census data. It is worth noting that census tracts conform to county lines (that is they are always subsets of a county), but may not follow zip code lines.

Civilian Labor Force: The civilian labor force comprises the total of all civilians age 16 and older classified as employed or unemployed, or seeking employment. This gives employers a measure of the labor pool.

Consumer Price Index (CPI): A measure of the average change in prices over time for a set group of goods and services. The Bureau of Labor Statistics publishes CPIs for two population groups: (1) for all urban consumers (CPI-U) which covers approximately 80 percent of the total population and (2) for all urban wage earners and clerical workers (CPI-W) which covers 32 percent of the total population. Among the CPI components are the costs of housing, food, transportation, and energy. While the CPI is not technically a cost of living index, it is often used to indicate changes in the cost-of-living.

Current Employment Statistics (CES) Survey: A monthly survey of nonfarm business establishments used to collect nonfarm payroll employment, and worker hours and earnings by industry and area. Through the Federal/State cooperative effort, these data are used to compute current monthly employment, and hours and earnings estimates, by industry, for the nation, the 50 states and the District of Columbia, and over 250 Metropolitan Statistical Areas (MSA's).

Current Population Survey (CPS): A monthly household survey of the civilian non-institutional population of the United States. This BLS survey provides labor market statistics (e.g., employment, unemployment and wages) by industry, occupation, and demographic characteristics. The Bureau of the Census collects data for this survey in cooperation with BLS.

CES Employment: A count of all persons who worked full or part time or received pay from a nonagricultural employer for any part of the pay period that included the 12th day of the month. Because this count comes from a survey of employers, persons who work for two different companies could be counted twice. Therefore, non-farm payroll employment is really a count of the number of jobs rather than the number of persons employed. This count is also based on where the jobs are located, regardless of where the workers reside. Non-farm payroll employment data are collected and compiled by Current Employment Statistics (CES) Survey.

Labor Market Information (LMI): A body of knowledge that includes a variety of economic, social, and demographic information. This information describes current conditions and forecasts employment conditions at a future date. LMI is comprised of population data, labor force data, industry data, occupational data, general economic trends, and career data.

Local Area Unemployment Statistics (LAUS): A federal-state cooperative program, which produces monthly estimates of total employment and unemployment for approximately 7,500 areas.

Metropolitan Area (MA): A Core Based Statistical Area associated with at least one urbanized area that has a population of at least 50,000. The Metropolitan Statistical Area comprises the central county or counties containing the core, plus adjacent outlying counties having a high degree of social and economic integration with the central county as measured through commuting.

North American Industrial Classification System (NAICS): A system of identifying industry activity, NAICS is replacing the U.S. Standard Industrial Classification (SIC) system. NAICS will reshape the way we track our industries. NAICS was developed jointly by the U.S., Canada, and Mexico to provide new comparability in statistics about business activity across North America.

Occupational Employment Statistics (OES): A federal state cooperative program, which collects detailed occupational data by industry in a three-year cycle. The OES survey is an annual mail survey measuring occupational employment and occupational wage rates for wage and salary workers in nonfarm establishments, by industry. On a national level, the survey samples approximately 400,000 establishments per year, taking 3 years to fully collect the sample of 1.2 million establishments.

Seasonal Adjustment: A statistical technique that eliminates the influences of weather, holidays, the opening and closing of schools, and other recurring seasonal events from economic time series. This permits easier observation and analysis of cyclical, trend, and other nonseasonal movements in the data.

Standard Occupational Classification (SOC): This is an occupational coding system that was presented by the Bureau of Labor Statistics (BLS) to replace and consolidate several previous coding systems used to classify occupations. The consolidated coding systems include the Occupational Employment Statistics (OES), the Dictionary of Occupational Titles (DOT), and the grouping of occupational titles used by the Census based on survey responses.

Workforce Regions: State specific geographical area, designated by the governor, within which employment and training services are provided under the Workforce Innovation and Opportunity Act (WIOA) in Alabama.

## EMPLOYEES IN NONAGRICULTURAL INDUSTRIES IN ALABAMA 1/

(in thousands)

INDUSTRY				NET CHANGE FROM:		PERCENT CHANGE FROM:	
	Mar p 2024	Feb r 2024	Mar r 2023	Feb r 2024	Mar r 2023	Feb r 2024	Mar r 2023
<b>Total Nonfarm</b>	<b>2187.2</b>	<b>2181.9</b>	<b>2148.3</b>	<b>5.3</b>	<b>38.9</b>	<b>0.24</b>	<b>1.81</b>
<b>Total Private</b>	<b>1778.0</b>	<b>1775.1</b>	<b>1748.4</b>	<b>2.9</b>	<b>29.6</b>	<b>0.16</b>	<b>1.69</b>
<b>Goods Producing</b>	<b>400.0</b>	<b>398.8</b>	<b>389.0</b>	<b>1.2</b>	<b>11.0</b>	<b>0.30</b>	<b>2.83</b>
<b>Mining and Logging</b>	<b>9.0</b>	<b>9.1</b>	<b>9.3</b>	<b>-0.1</b>	<b>-0.3</b>	<b>-1.10</b>	<b>-3.23</b>
Mining (except Oil and Gas)	4.5	4.5	4.6	0.0	-0.1	0.00	-2.17
<b>Construction</b>	<b>104.0</b>	<b>104.0</b>	<b>99.9</b>	<b>0.0</b>	<b>4.1</b>	<b>0.00</b>	<b>4.10</b>
Construction of Buildings	23.9	23.6	22.6	0.3	1.3	1.27	5.75
Heavy and Civil Engineering Construction	16.5	16.7	18.1	-0.2	-1.6	-1.20	-8.84
Specialty Trade Contractors	63.6	63.7	59.2	-0.1	4.4	-0.16	7.43
<b>Manufacturing</b>	<b>287.0</b>	<b>285.7</b>	<b>279.8</b>	<b>1.3</b>	<b>7.2</b>	<b>0.46</b>	<b>2.57</b>
<b>Durable Goods Manufacturing</b>	<b>195.9</b>	<b>194.9</b>	<b>189.2</b>	<b>1.0</b>	<b>6.7</b>	<b>0.51</b>	<b>3.54</b>
Wood Product Manufacturing	19.0	19.0	18.9	0.0	0.1	0.00	0.53
Primary Metal Manufacturing	18.1	18.1	17.9	0.0	0.2	0.00	1.12
Fabricated Metal Product Manufacturing	27.3	27.2	27.3	0.1	0.0	0.37	0.00
Machinery Manufacturing	10.8	10.8	10.7	0.0	0.1	0.00	0.93
Computer and Electronic Product Manufacturing	7.7	7.7	7.7	0.0	0.0	0.00	0.00
Elect.Equipment, Appliance & Component Manfng	6.8	6.8	6.9	0.0	-0.1	0.00	-1.45
Transportation Equipment Manufacturing	79.7	79.2	74.8	0.5	4.9	0.63	6.55
Motor Vehicle Manufacturing	22.4	22.3	21.4	0.1	1.0	0.45	4.67
Motor Vehicle Parts Manufacturing	30.3	30.2	27.5	0.1	2.8	0.33	10.18
Aerospace Products & Parts Manufacturing	14.7	14.7	14.4	0.0	0.3	0.00	2.08
Furniture and Related Product Manufacturing	9.1	9.0	9.3	0.1	-0.2	1.11	-2.15
<b>Non-Durable Goods Manufacturing</b>	<b>91.1</b>	<b>90.8</b>	<b>90.6</b>	<b>0.3</b>	<b>0.5</b>	<b>0.33</b>	<b>0.55</b>
Food Manufacturing	32.6	32.6	32.1	0.0	0.5	0.00	1.56
Animal Slaughtering and Processing	23.8	23.7	23.4	0.1	0.4	0.42	1.71
Textile Mills	3.8	3.9	4.2	-0.1	-0.4	-2.56	-9.52
Fiber, Yarn, and Thread Mills	1.5	1.5	1.6	0.0	-0.1	0.00	-6.25
Textile Product Mills	2.5	2.5	2.8	0.0	-0.3	0.00	-10.71
Textile Furnishings Mills	1.1	1.1	1.4	0.0	-0.3	0.00	-21.43
Paper Manufacturing	11.3	11.2	11.1	0.1	0.2	0.89	1.80
Pulp, Paper, and Paperboard Mills	6.5	6.5	6.4	0.0	0.1	0.00	1.56
Plastics and Rubber Products Manufacturing	18.6	18.4	18.0	0.2	0.6	1.09	3.33
<b>Service Providing</b>	<b>1787.2</b>	<b>1783.1</b>	<b>1759.3</b>	<b>4.1</b>	<b>27.9</b>	<b>0.23</b>	<b>1.59</b>
<b>Private Service Providing</b>	<b>1378.0</b>	<b>1376.3</b>	<b>1359.4</b>	<b>1.7</b>	<b>18.6</b>	<b>0.12</b>	<b>1.37</b>
<b>Trade, Transportation, and Utilities</b>	<b>409.8</b>	<b>410.6</b>	<b>405.0</b>	<b>-0.8</b>	<b>4.8</b>	<b>-0.19</b>	<b>1.19</b>
<b>Wholesale Trade</b>	<b>79.0</b>	<b>78.9</b>	<b>77.8</b>	<b>0.1</b>	<b>1.2</b>	<b>0.13</b>	<b>1.54</b>
Merchant Wholesalers, Durable Goods	39.1	39.2	38.6	-0.1	0.5	-0.26	1.30
Merchant Wholesalers, Nondurable Goods	23.3	23.2	23.0	0.1	0.3	0.43	1.30
Wholesale Trade Agents and Brokers	16.6	16.5	16.2	0.1	0.4	0.61	2.47

p = Preliminary r = Revised

1/ Data include, on a place of work basis, all full and part-time nonagricultural wage and salary employees who worked during or received pay for, any part of the pay period which included the 12th of the month. Proprietors, self-employed persons, workers in private households and unpaid family workers are excluded. Estimates adjusted to a 2023 benchmark, based on the North American Industry Classification System (NAICS), 2022. Totals may not add due to rounding.

## EMPLOYEES IN NONAGRICULTURAL INDUSTRIES IN ALABAMA <sup>1/</sup>

(in thousands)

INDUSTRY				NET CHANGE FROM:		PERCENT CHANGE FROM:	
	Mar p 2024	Feb r 2024	Mar r 2023	Feb r 2024	Mar r 2023	Feb r 2024	Mar r 2023
<b>Retail Trade</b>	<b>239.5</b>	<b>240.9</b>	<b>235.6</b>	<b>-1.4</b>	<b>3.9</b>	<b>-0.58</b>	<b>1.66</b>
Motor Vehicle and Parts Dealers	34.4	34.6	33.1	-0.2	1.3	-0.58	3.93
Building Mat. & Garden Equip. and Supplies Dealers	23.4	23.2	23.6	0.2	-0.2	0.86	-0.85
Food and Beverage Retailers	36.7	37.1	36.1	-0.4	0.6	-1.08	1.66
General Merchandise Retailers	61.4	61.5	59.5	-0.1	1.9	-0.16	3.19
Department Stores	13.6	13.6	13.7	0.0	-0.1	0.00	-0.73
Warehouse Clubs, Supercenters, and Other General	47.8	47.9	45.8	-0.1	2.0	-0.21	4.37
Health and Personal Care Retailers	15.8	16.0	16.0	-0.2	-0.2	-1.25	-1.25
<b>Trans, Warehousing, and Utilities</b>	<b>91.3</b>	<b>90.8</b>	<b>91.6</b>	<b>0.5</b>	<b>-0.3</b>	<b>0.55</b>	<b>-0.33</b>
Utilities	13.0	12.9	12.9	0.1	0.1	0.78	0.78
Elect. Power Gen., Transmission & Distribution	10.7	10.7	10.7	0.0	0.0	0.00	0.00
Transportation and Warehousing	78.3	77.9	78.7	0.4	-0.4	0.51	-0.51
Truck Transportation	27.3	27.0	27.2	0.3	0.1	1.11	0.37
General Freight Trucking	17.4	17.2	17.6	0.2	-0.2	1.16	-1.14
<b>Information</b>	<b>23.8</b>	<b>23.6</b>	<b>23.2</b>	<b>0.2</b>	<b>0.6</b>	<b>0.85</b>	<b>2.59</b>
Telecommunications	7.5	7.5	7.6	0.0	-0.1	0.00	-1.32
<b>Financial Activities</b>	<b>104.1</b>	<b>104.4</b>	<b>104.2</b>	<b>-0.3</b>	<b>-0.1</b>	<b>-0.29</b>	<b>-0.10</b>
Finance and Insurance	76.8	76.9	76.4	-0.1	0.4	-0.13	0.52
Credit Intermediation and Related Activities	38.3	38.5	38.8	-0.2	-0.5	-0.52	-1.29
Depository Credit Intermediation	29.8	29.9	30.5	-0.1	-0.7	-0.33	-2.30
Insurance Carriers and Related Activities	33.3	33.2	32.6	0.1	0.7	0.30	2.15
Insurance Carriers	14.3	14.3	14.0	0.0	0.3	0.00	2.14
Real Estate and Rental and Leasing	27.3	27.5	27.8	-0.2	-0.5	-0.73	-1.80
<b>Professional and Business Services</b>	<b>266.3</b>	<b>267.3</b>	<b>266.4</b>	<b>-1.0</b>	<b>-0.1</b>	<b>-0.37</b>	<b>-0.04</b>
Professional, Scientific and Technical Services	127.2	128.0	123.6	-0.8	3.6	-0.63	2.91
Architectural, Engineering, and Related Services	33.0	33.2	31.5	-0.2	1.5	-0.60	4.76
Computer Systems Design and Related Services	26.7	27.1	26.4	-0.4	0.3	-1.48	1.14
Management of Companies and Enterprises	17.3	17.4	17.2	-0.1	0.1	-0.57	0.58
Admin, Support & Waste Mngmt & Remediation Svcs.	121.8	121.9	125.6	-0.1	-3.8	-0.08	-3.03
<b>Private Education and Health Services</b>	<b>266.4</b>	<b>265.8</b>	<b>255.9</b>	<b>0.6</b>	<b>10.5</b>	<b>0.23</b>	<b>4.10</b>
Private Educational Services	31.9	31.4	31.8	0.5	0.1	1.59	0.31
Health Care and Social Assistance	234.5	234.4	224.1	0.1	10.4	0.04	4.64
Ambulatory Health Care Services	109.9	110.3	105.8	-0.4	4.1	-0.36	3.88
Offices of Physicians	44.7	44.8	42.6	-0.1	2.1	-0.22	4.93
Hospitals	46.9	46.9	45.6	0.0	1.3	0.00	2.85
Nursing and Residential Care Facilities	43.8	43.6	40.5	0.2	3.3	0.46	8.15
Social Assistance	33.9	33.6	32.2	0.3	1.7	0.89	5.28
<b>Leisure and Hospitality</b>	<b>202.2</b>	<b>199.8</b>	<b>202.0</b>	<b>2.4</b>	<b>0.2</b>	<b>1.20</b>	<b>0.10</b>
Arts, Entertainment, and Recreation	22.3	21.7	20.8	0.6	1.5	2.76	7.21
Amusements, Gambling, and Recreation	17.7	17.2	16.9	0.5	0.8	2.91	4.73
Accommodation and Food Services	179.9	178.1	181.2	1.8	-1.3	1.01	-0.72
Food Services and Drinking Places	163.4	161.4	164.2	2.0	-0.8	1.24	-0.49
Restaurants and Other Eating Places	152.5	150.4	154.1	2.1	-1.6	1.40	-1.04
Full-Service Restaurants	61.9	61.6	63.7	0.3	-1.8	0.49	-2.83
Limited-Service Eating Places	90.6	88.8	90.4	1.8	0.2	2.03	0.22
<b>Other Services</b>	<b>105.4</b>	<b>104.8</b>	<b>102.7</b>	<b>0.6</b>	<b>2.7</b>	<b>0.57</b>	<b>2.63</b>
<b>Government</b>	<b>409.2</b>	<b>406.8</b>	<b>399.9</b>	<b>2.4</b>	<b>9.3</b>	<b>0.59</b>	<b>2.33</b>
Federal Government	58.1	57.9	56.2	0.2	1.9	0.35	3.38
State Government	123.8	123.2	122.7	0.6	1.1	0.49	0.90
State Government Educational Services	72.3	71.8	72.3	0.5	0.0	0.70	0.00
State Government Excluding Educational Services	51.5	51.4	50.4	0.1	1.1	0.19	2.18
Local Government	227.3	225.7	221.0	1.6	6.3	0.71	2.85
Local Government Educational Services	103.3	102.5	101.4	0.8	1.9	0.78	1.87
Local Government Excluding Educational Services	124.0	123.2	119.6	0.8	4.4	0.65	3.68

p = Preliminary r = Revised

<sup>1/</sup> Data include, on a place of work basis, all full and part-time nonagricultural wage and salary employees who worked during or received pay for, any part of the pay period which included the 12th of the month. Proprietors, self-employed persons, workers in private households and unpaid family workers are excluded. Estimates adjusted to a 2023 benchmark, based on the North American Industry Classification System (NAICS), 2022. Totals may not add due to rounding.

## NONAGRICULTURAL WAGE AND SALARY EMPLOYMENT IN ALABAMA 1/ (in thousands)

INDUSTRY	Not Seasonally Adjusted			Seasonally Adjusted <sup>3/</sup>		
	Mar p 2024	Feb r 2024	Mar r 2023	Mar p 2024	Feb r 2024	Mar r 2023
<b>Total Nonfarm<sup>2/</sup></b>	<b>2187.2</b>	<b>2181.9</b>	<b>2148.3</b>	<b>2191.1</b>	<b>2186.5</b>	<b>2155.1</b>
<b>Total Private</b>	<b>1778.0</b>	<b>1775.1</b>	<b>1748.4</b>	<b>1783.9</b>	<b>1780.7</b>	<b>1756.8</b>
<b>Goods Producing</b>	<b>400.0</b>	<b>398.8</b>	<b>389.0</b>	<b>400.7</b>	<b>399.1</b>	<b>388.8</b>
Mining and Logging	9.0	9.1	9.3	9.0	9.1	9.3
Construction	104.0	104.0	99.9	104.2	104.1	99.6
Manufacturing	287.0	285.7	279.8	287.5	285.9	279.9
<b>Service Providing</b>	<b>1787.2</b>	<b>1783.1</b>	<b>1759.3</b>	<b>1790.4</b>	<b>1787.4</b>	<b>1766.3</b>
<b>Private Service Providing</b>	<b>1378.0</b>	<b>1376.3</b>	<b>1359.4</b>	<b>1383.2</b>	<b>1381.6</b>	<b>1368.0</b>
Trade, Transportation, and Utilities	409.8	410.6	405.0	410.9	410.8	408.6
Wholesale Trade	79.0	78.9	77.8	78.7	78.5	77.9
Retail Trade	239.5	240.9	235.6	240.6	241.0	237.9
Transportation, Warehousing, and Utilities	91.3	90.8	91.6	91.6	91.3	92.8
Information	23.8	23.6	23.2	23.6	23.6	23.2
Financial Activities	104.1	104.4	104.2	104.7	104.9	104.7
Finance and Insurance	76.8	76.9	76.4	76.7	76.9	76.7
Real Estate and Rental and Leasing	27.3	27.5	27.8	28.0	28.0	28.0
<b>Professional and Business Services</b>	<b>266.3</b>	<b>267.3</b>	<b>266.4</b>	<b>266.2</b>	<b>266.7</b>	<b>267.2</b>
Professional, Scientific, and Tech Services	127.2	128.0	123.6	126.6	126.3	123.4
Management of Companies and Enterprises	17.3	17.4	17.2	17.4	17.4	17.2
Admin, Supp & Waste Manage & Remed Services	121.8	121.9	125.6	122.2	123.0	126.6
<b>Private Education and Health Services</b>	<b>266.4</b>	<b>265.8</b>	<b>255.9</b>	<b>267.4</b>	<b>265.7</b>	<b>257.2</b>
Private Educational Services	31.9	31.4	31.8	31.3	30.5	31.7
Health Care and Social Assistance	234.5	234.4	224.1	236.1	235.2	225.5
<b>Leisure and Hospitality</b>	<b>202.2</b>	<b>199.8</b>	<b>202.0</b>	<b>205.1</b>	<b>204.9</b>	<b>204.3</b>
Arts, Entertainment, and Recreation	22.3	21.7	20.8	23.2	23.3	22.2
Accommodation and Food Services	179.9	178.1	181.2	181.9	181.6	182.1
<b>Other Services</b>	<b>105.4</b>	<b>104.8</b>	<b>102.7</b>	<b>105.3</b>	<b>105.0</b>	<b>102.8</b>
<b>Government</b>	<b>409.2</b>	<b>406.8</b>	<b>399.9</b>	<b>407.2</b>	<b>405.8</b>	<b>398.3</b>
Federal Government	58.1	57.9	56.2	58.2	57.9	56.3
State Government	123.8	123.2	122.7	122.8	122.4	121.9
Local Government	227.3	225.7	221.0	226.2	225.5	220.1

METROPOLITAN STATISTICAL AREAS Total Nonfarm Employment	Not Seasonally Adjusted			Seasonally Adjusted		
	Mar p 2024	Feb r 2024	Mar r 2023	Mar p 2024	Feb r 2024	Mar r 2023
<b>Anniston-Oxford-Jackson</b>	<b>47.4</b>	<b>47.3</b>	<b>46.8</b>	<b>47.3</b>	<b>47.3</b>	<b>46.9</b>
<b>Auburn-Opelika</b>	<b>75.0</b>	<b>74.9</b>	<b>72.3</b>	<b>75.2</b>	<b>75.0</b>	<b>72.6</b>
<b>Birmingham-Hoover</b>	<b>570.1</b>	<b>568.1</b>	<b>561.6</b>	<b>572.3</b>	<b>571.4</b>	<b>564.7</b>
<b>Daphne-Fairhope-Foley</b>	<b>88.5</b>	<b>87.8</b>	<b>86.8</b>	<b>89.1</b>	<b>89.1</b>	<b>87.4</b>
<b>Decatur</b>	<b>60.6</b>	<b>60.8</b>	<b>60.3</b>	<b>60.8</b>	<b>60.9</b>	<b>60.4</b>
<b>Dothan</b>	<b>63.7</b>	<b>63.4</b>	<b>62.6</b>	<b>63.9</b>	<b>63.5</b>	<b>62.7</b>
<b>Florence-Muscle Shoals</b>	<b>59.4</b>	<b>58.9</b>	<b>58.9</b>	<b>59.4</b>	<b>59.2</b>	<b>58.8</b>
<b>Gadsden</b>	<b>34.9</b>	<b>34.9</b>	<b>34.7</b>	<b>35.0</b>	<b>35.0</b>	<b>34.7</b>
<b>Huntsville</b>	<b>280.2</b>	<b>280.5</b>	<b>273.1</b>	<b>280.4</b>	<b>281.1</b>	<b>273.7</b>
<b>Mobile</b>	<b>188.5</b>	<b>188.4</b>	<b>188.0</b>	<b>189.1</b>	<b>189.3</b>	<b>188.6</b>
<b>Montgomery</b>	<b>183.7</b>	<b>183.3</b>	<b>181.5</b>	<b>184.7</b>	<b>184.2</b>	<b>182.1</b>
<b>Tuscaloosa</b>	<b>115.9</b>	<b>115.9</b>	<b>114.1</b>	<b>115.9</b>	<b>115.9</b>	<b>114.2</b>

p= Preliminary      r= Revised

1/ Nonagricultural wage and salary employment estimates prepared by the United States Department of Labor. Data estimated on place of work basis and seasonally adjusted by use of the Bureau of Labor Statistics X-12 Seasonal Adjustment method.

2/ Total Nonfarm employment may not equal sum of data in seasonally adjusted columns due to some series not being seasonally adjusted.

3/ A 3-month average of seasonally adjusted over-the-month change is available at [www.bls.gov/sae/tables/state-news-release/hon](http://www.bls.gov/sae/tables/state-news-release/hon)

### HOURS AND EARNINGS DATA FOR SELECTED NONAGRICULTURAL INDUSTRIES IN ALABAMA<sup>1/</sup>

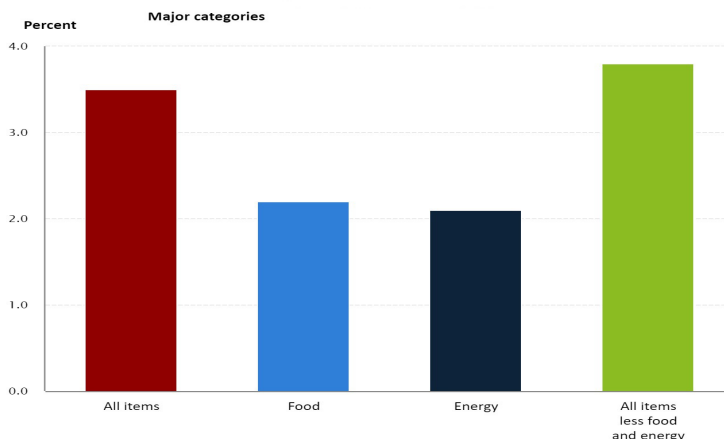
STATEWIDE INDUSTRY	All Employees (in thousands)			Average Weekly Earnings			Average Weekly Hours			Average Hourly Earnings		
	Mar p 2024	Feb r 2024	Mar r 2023	Mar p 2024	Feb r 2024	Mar r 2023	Mar p 2024	Feb r 2024	Mar r 2023	Mar p 2024	Feb r 2024	Mar r 2023
<b>Total Private</b>	<b>1,778.0</b>	<b>1,775.1</b>	<b>1,748.4</b>	<b>\$1,031.08</b>	<b>\$1,031.21</b>	<b>\$992.10</b>	<b>34.6</b>	<b>34.5</b>	<b>34.4</b>	<b>\$29.80</b>	<b>\$29.89</b>	<b>\$28.84</b>
<b>Goods Producing</b>	<b>400.0</b>	<b>398.8</b>	<b>389.0</b>	<b>\$1,209.09</b>	<b>\$1,206.14</b>	<b>\$1,183.49</b>	<b>41.0</b>	<b>40.9</b>	<b>40.2</b>	<b>\$29.49</b>	<b>\$29.49</b>	<b>\$29.44</b>
Construction	104.0	104.0	99.9	\$1,326.36	\$1,329.54	\$1,196.91	42.0	41.6	39.0	\$31.58	\$31.96	\$30.69
Manufacturing	287.0	285.7	279.8	\$1,192.42	\$1,189.58	\$1,162.39	40.6	40.6	40.8	\$29.37	\$29.30	\$28.49
<b>Private Service Providing</b>	<b>1,378.0</b>	<b>1,376.3</b>	<b>1,359.4</b>	<b>\$978.06</b>	<b>\$981.98</b>	<b>\$939.06</b>	<b>32.7</b>	<b>32.7</b>	<b>32.8</b>	<b>\$29.91</b>	<b>\$30.03</b>	<b>\$28.63</b>
Trade, Transportation, and Utilities	409.8	410.6	405.0	\$879.78	\$864.55	\$818.75	33.0	32.6	32.4	\$26.66	\$26.52	\$25.27
Financial Activities	104.1	104.4	104.2	\$1,329.31	\$1,376.25	\$1,257.67	36.6	36.7	37.7	\$36.32	\$37.50	\$33.36
Professional and Business Services	266.3	267.3	266.4	\$1,316.95	\$1,318.77	\$1,307.14	36.4	36.2	36.8	\$36.18	\$36.43	\$35.52
Private Education and Health Services	266.4	265.8	255.9	\$967.48	\$966.83	\$912.42	33.5	33.9	33.3	\$28.88	\$28.52	\$27.40
Leisure and Hospitality	202.2	199.8	202.0	\$409.88	\$403.74	\$404.61	25.1	24.8	25.1	\$16.33	\$16.28	\$16.12
Other Services	105.4	104.8	102.7	\$885.64	\$900.36	\$861.24	32.1	32.8	32.1	\$27.59	\$27.45	\$26.83
<b>MANUFACTURING: PRODUCTION WORKERS</b>												
	Mar p 2024	Feb r 2024	Mar r 2023	Mar p 2024	Feb r 2024	Mar r 2023	Mar p 2024	Feb r 2024	Mar r 2023	Mar p 2024	Feb r 2024	Mar r 2023
Manufacturing	201.1	201.0	203.9	\$1,017.32	\$999.74	\$987.46	42.3	41.5	41.7	\$24.05	\$24.09	\$23.68
Durable Goods	133.7	133.8	132.4	\$1,016.18	\$1,004.00	\$990.37	42.2	41.3	41.3	\$24.08	\$24.31	\$23.98
Non-Durable Goods	67.4	67.2	71.5	\$1,017.18	\$988.57	\$979.25	42.4	41.8	42.3	\$23.99	\$23.65	\$23.15
<b>METROPOLITAN STATISTICAL AREAS</b>												
	Mar p 2024	Feb r 2024	Mar r 2023	Mar p 2024	Feb r 2024	Mar r 2023	Mar p 2024	Feb r 2024	Mar r 2023	Mar p 2024	Feb r 2024	Mar r 2023
Anniston-Oxford-Jackson	47.4	47.3	46.8	\$803.88	\$828.30	\$806.06	33.0	33.0	33.6	\$24.36	\$25.10	\$23.99
Auburn-Opelika	75.0	74.9	72.3	\$745.54	\$769.66	\$776.24	29.1	30.1	31.8	\$25.62	\$25.57	\$24.41
Birmingham-Hoover	570.1	568.1	561.6	\$1,069.77	\$1,093.78	\$1,066.72	33.8	34.0	34.6	\$31.65	\$32.17	\$30.83
Daphne-Fairhope-Foley	88.5	87.8	86.8	\$822.37	\$819.59	\$797.87	31.4	30.8	31.4	\$26.19	\$26.61	\$25.41
Decatur	60.6	60.8	60.3	\$893.21	\$845.99	\$874.65	35.7	34.7	34.3	\$25.02	\$24.38	\$25.50
Dothan	63.7	63.4	62.6	\$779.98	\$767.69	\$733.87	34.3	33.7	34.6	\$22.74	\$22.78	\$21.21
Florence-Muscle Shoals	59.4	58.9	58.9	\$881.06	\$862.51	\$826.14	33.9	33.6	33.9	\$25.99	\$25.67	\$24.37
Gadsden	34.9	34.9	34.7	\$800.72	\$817.38	\$776.42	33.8	34.2	34.6	\$23.69	\$23.90	\$22.44
Huntsville	280.2	280.5	273.1	\$1,352.40	\$1,372.06	\$1,316.18	35.0	35.1	34.6	\$38.64	\$39.09	\$38.04
Mobile	188.5	188.4	188.0	\$1,036.80	\$1,008.56	\$977.92	36.0	35.5	35.9	\$28.80	\$28.41	\$27.24
Montgomery	183.7	183.3	181.5	\$1,010.33	\$999.96	\$925.45	35.6	35.7	34.7	\$28.38	\$28.01	\$26.67
Tuscaloosa	115.9	115.9	114.1	\$846.22	\$863.20	\$842.86	32.2	33.2	34.8	\$26.28	\$26.00	\$24.22

p = Preliminary r = Revised

<sup>1/</sup> Estimates, computed on a gross basis, do not represent straight time earnings or standard workweek.

## Consumer Price Index

12-month percentage change, Consumer Price Index, selected categories, March 2024, not seasonally adjusted

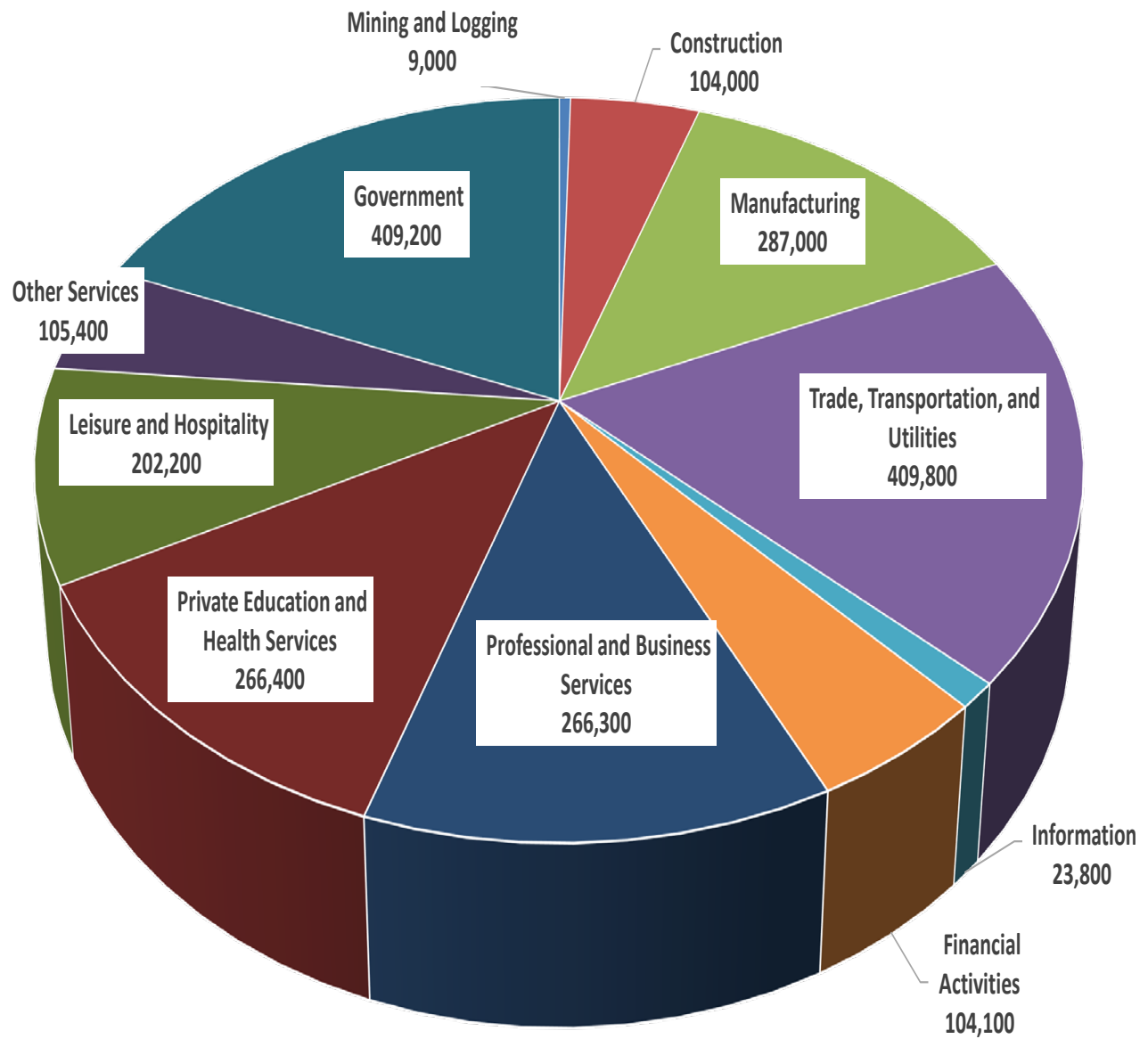


The Consumer Price Index for All Urban Consumers (CPI-U) increased 3.5 percent over the last 12 months to an index level of 312.332 (1982-84=100). For March, the index increased 0.6 percent prior to seasonal adjustment.

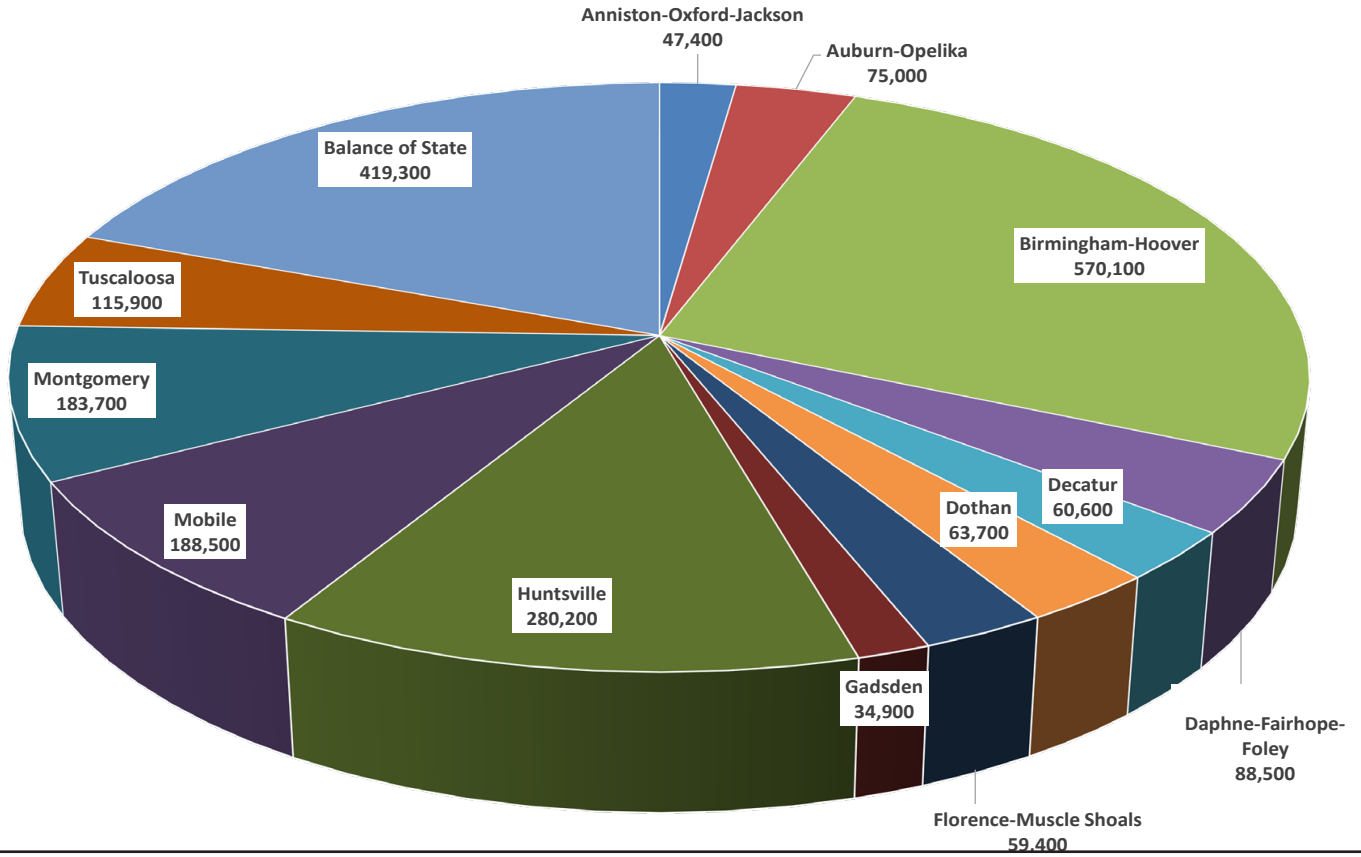
The Consumer Price Index for Urban Wage Earners and Clerical Workers (CPI-W) increased 3.5 percent over the last 12 months to an index level of 306.502 (1982-84=100). For March, the index increased 0.7 percent prior to seasonal adjustment.

For further details visit the CPI homepage online at <http://www.bls.gov/cpi/> or contact the CPI Information Office at (202) 691-7000.

Alabama March 2024 Preliminary  
Current Employment Statistics  
Statewide Employment by Industry Sector



Alabama March 2024 Preliminary  
Current Employment Statistics  
Statewide Employment by Geography



Estimates prepared by the U.S. Department of Labor, Bureau of Labor Statistics and adjusted to a 2023 benchmark, based on the North American Industry Classification System (NAICS), 2022.

**NONAGRICULTURAL WAGE AND SALARY EMPLOYMENT  
FOR ALABAMA METROPOLITAN STATISTICAL AREAS (MSA'S)<sup>1/</sup>**

<b><u>ANNISTON-OXFORD-JACKSONVILLE MSA</u></b>	<b>Mar p 2024</b>	<b>Feb r 2024</b>	<b>Mar r 2023</b>	<b>Net Change From :</b>	
				<b>Feb r 2024</b>	<b>Mar r 2023</b>
<b>TOTAL NONAGRICULTURAL EMPLOYMENT</b>	<b>47,400</b>	<b>47,300</b>	<b>46,800</b>	<b>100</b>	<b>600</b>
<b>GOODS PRODUCING</b>	<b>8,200</b>	<b>8,100</b>	<b>8,100</b>	<b>100</b>	<b>100</b>
Mining, Logging, and Construction	1,300	1,300	1,200	0	100
Manufacturing	6,900	6,800	6,900	100	0
<b>SERVICE PROVIDING</b>	<b>39,200</b>	<b>39,200</b>	<b>38,700</b>	<b>0</b>	<b>500</b>
Trade, Transportation, and Utilities	9,300	9,400	9,100	-100	200
Wholesale Trade	1,800	1,800	1,800	0	0
Retail Trade	6,100	6,200	6,000	-100	100
Transportation, Warehousing and Utilities	1,400	1,400	1,300	0	100
Information	300	300	300	0	0
Financial Activities	1,400	1,400	1,400	0	0
Professional and Business Services	3,800	3,800	4,100	0	-300
Private Education and Health Services	4,700	4,700	4,600	0	100
Leisure and Hospitality	5,000	4,900	5,000	100	0
Other Services	2,000	2,000	1,900	0	100
Government	12,700	12,700	12,300	0	400
Federal	3,500	3,500	3,400	0	100
State and Local	9,200	9,200	8,900	0	300

<sup>1</sup> Place of work basis. p Preliminary. r Revised.

NOTE: Estimates prepared by the U.S. Department of Labor, Bureau of Labor Statistics.

Estimates adjusted to a 2023 benchmark. Based on the North American Industry Classification System (NAICS), 2022.

<b><u>AUBURN-OPELIKA MSA</u></b>	<b>Mar p 2024</b>	<b>Feb r 2024</b>	<b>Mar r 2023</b>	<b>Net Change From :</b>	
				<b>Feb r 2024</b>	<b>Mar r 2023</b>
<b>TOTAL NONAGRICULTURAL EMPLOYMENT</b>	<b>75,000</b>	<b>74,900</b>	<b>72,300</b>	<b>100</b>	<b>2,700</b>
<b>GOODS PRODUCING</b>	<b>10,400</b>	<b>10,400</b>	<b>10,200</b>	<b>0</b>	<b>200</b>
Mining, Logging, and Construction	3,300	3,300	3,300	0	0
Manufacturing	7,100	7,100	6,900	0	200
<b>SERVICE PROVIDING</b>	<b>64,600</b>	<b>64,500</b>	<b>62,100</b>	<b>100</b>	<b>2,500</b>
Trade, Transportation, and Utilities	14,400	14,500	14,200	-100	200
Wholesale Trade	2,300	2,300	2,400	0	-100
Retail Trade	8,300	8,400	8,000	-100	300
Transportation, Warehousing and Utilities	3,800	3,800	3,800	0	0
Information	1,000	900	900	100	100
Financial Activities	2,300	2,300	2,300	0	0
Professional and Business Services	8,000	8,000	7,300	0	700
Private Education and Health Services	5,900	5,900	5,500	0	400
Leisure and Hospitality	9,700	9,700	9,400	0	300
Other Services	2,700	2,700	2,600	0	100
Government	20,600	20,500	19,900	100	700
Federal	400	400	400	0	0
State and Local	20,200	20,100	19,500	100	700

<sup>1</sup> Place of work basis. p Preliminary. r Revised.

NOTE: Estimates prepared by the U.S. Department of Labor, Bureau of Labor Statistics.

Estimates adjusted to a 2023 benchmark. Based on the North American Industry Classification System (NAICS), 2022.

**NONAGRICULTURAL WAGE AND SALARY EMPLOYMENT  
FOR ALABAMA METROPOLITAN STATISTICAL AREAS (MSA'S)<sup>1/</sup>**

<b><u>BIRMINGHAM - HOOVER MSA</u></b>	<b>Mar p 2024</b>	<b>Feb r 2024</b>	<b>Mar r 2023</b>	<b>Net Change From :</b>	
				<b>Feb r 2024</b>	<b>Mar r 2023</b>
<b>TOTAL NONAGRICULTURAL EMPLOYMENT</b>	<b>570,100</b>	<b>568,100</b>	<b>561,600</b>	<b>2,000</b>	<b>8,500</b>
<b>GOODS PRODUCING</b>	<b>73,800</b>	<b>73,500</b>	<b>72,100</b>	<b>300</b>	<b>1,700</b>
Mining and Logging	2,400	2,400	2,700	0	-300
Construction	30,600	30,400	29,800	200	800
Specialty Trade Contractors	18,200	18,100	17,600	100	600
Manufacturing	40,800	40,700	39,600	100	1,200
Durable Goods	28,900	28,900	27,900	0	1,000
Primary Metal Manufacturing	5,200	5,200	5,300	0	-100
Nondurable Goods	11,900	11,800	11,700	100	200
Food Manufacturing	4,000	4,000	3,900	0	100
<b>SERVICE PROVIDING</b>	<b>496,300</b>	<b>494,600</b>	<b>489,500</b>	<b>1,700</b>	<b>6,800</b>
Trade, Transportation, and Utilities	114,600	114,200	113,200	400	1,400
Wholesale Trade	28,500	28,200	28,100	300	400
Merchant Wholesalers	14,100	13,900	13,600	200	500
Retail Trade	57,600	57,700	56,900	-100	700
General Merchandise Retailers	14,200	14,000	13,700	200	500
Transportation, Warehousing and Utilities	28,500	28,300	28,200	200	300
Utilities	6,400	6,300	6,400	100	0
Transportation and Warehousing	22,100	22,000	21,800	100	300
Information	9,600	9,500	9,500	100	100
Telecommunication	3,100	3,100	3,200	0	-100
Financial Activities	43,800	43,700	44,400	100	-600
Finance and Insurance	35,200	35,200	36,100	0	-900
Credit Intermediation and Related	13,900	14,000	15,100	-100	-1,200
Insurance Carriers and Related	18,700	18,700	18,400	0	300
Professional and Business Services	75,800	76,400	77,000	-600	-1,200
Professional, Scientific and Technical Services	32,400	32,800	32,100	-400	300
Management of Companies and Enterprises	9,200	9,100	9,200	100	0
Admin., Support and Waste Management	34,200	34,500	35,700	-300	-1,500
Private Education and Health Services	79,000	78,600	75,900	400	3,100
Health Care and Social Assistance	71,000	70,800	67,800	200	3,200
Ambulatory Healthcare	34,600	34,700	33,600	-100	1,000
Hospitals	17,200	17,100	16,700	100	500
Leisure and Hospitality	49,900	49,100	49,400	800	500
Food Service and Drinking Places	39,600	38,900	39,700	700	-100
Other Services	33,100	32,900	32,300	200	800
Government	90,500	90,200	87,800	300	2,700
Federal	9,900	9,900	9,600	0	300
State	35,500	35,400	34,000	100	1,500
Local	45,100	44,900	44,200	200	900

<sup>1</sup> Place of work basis. p Preliminary. r Revised.

NOTE: Estimates prepared by the U.S. Department of Labor, Bureau of Labor Statistics.

Estimates adjusted to a 2023 benchmark. Based on the North American Industry Classification System (NAICS), 2022.

<b><u>DAPHNE-FAIRHOPE-FOLEY MSA</u></b>	<b>Mar p 2024</b>	<b>Feb r 2024</b>	<b>Mar r 2023</b>	<b>Net Change From :</b>	
				<b>Feb r 2024</b>	<b>Mar r 2023</b>
<b>TOTAL NONAGRICULTURAL EMPLOYMENT</b>	<b>88,500</b>	<b>87,800</b>	<b>86,800</b>	<b>700</b>	<b>1,700</b>
<b>GOODS PRODUCING</b>	<b>9,700</b>	<b>9,700</b>	<b>9,800</b>	<b>0</b>	<b>-100</b>
<b>SERVICE PROVIDING</b>	<b>78,800</b>	<b>78,100</b>	<b>77,000</b>	<b>700</b>	<b>1,800</b>
Government	11,500	11,400	11,000	100	500

<sup>1</sup> Place of work basis. p Preliminary. r Revised.

NOTE: Estimates prepared by the U.S. Department of Labor, Bureau of Labor Statistics.

Estimates adjusted to a 2023 benchmark. Based on the North American Industry Classification System (NAICS), 2022.

**NONAGRICULTURAL WAGE AND SALARY EMPLOYMENT  
FOR ALABAMA METROPOLITAN STATISTICAL AREAS (MSA'S)<sup>1/</sup>**

<b><u>DECATUR MSA</u></b>	<b>Mar p 2024</b>	<b>Feb r 2024</b>	<b>Mar r 2023</b>	<b>Net Change From :</b>	
				<b>Feb r 2024</b>	<b>Mar r 2023</b>
<b>TOTAL NONAGRICULTURAL EMPLOYMENT</b>	<b>60,600</b>	<b>60,800</b>	<b>60,300</b>	<b>-200</b>	<b>300</b>
<b>GOODS PRODUCING</b>	<b>18,600</b>	<b>18,600</b>	<b>18,700</b>	<b>0</b>	<b>-100</b>
Mining, Logging, and Construction	4,500	4,500	4,400	0	100
Manufacturing	14,100	14,100	14,300	0	-200
Durable Goods	7,800	7,800	7,900	0	-100
Nondurable Goods	6,300	6,300	6,400	0	-100
<b>SERVICE PROVIDING</b>	<b>42,000</b>	<b>42,200</b>	<b>41,600</b>	<b>-200</b>	<b>400</b>
Trade, Transportation, and Utilities	10,800	10,900	10,800	-100	0
Wholesale Trade	2,400	2,400	2,400	0	0
Retail Trade	6,400	6,500	6,400	-100	0
Transportation, Warehousing and Utilities	2,000	2,000	2,000	0	0
Information	400	400	400	0	0
Financial Activities	2,400	2,400	2,200	0	200
Professional and Business Services	6,400	6,500	6,600	-100	-200
Private Education and Health Services	5,100	5,100	5,000	0	100
Leisure and Hospitality	5,100	5,100	5,100	0	0
Other Services	2,700	2,700	2,600	0	100
Government	9,100	9,100	8,900	0	200
Federal	400	400	400	0	0
State and Local	8,700	8,700	8,500	0	200

<sup>1</sup> Place of work basis. p Preliminary. r Revised.

NOTE: Estimates prepared by the U.S. Department of Labor, Bureau of Labor Statistics.

Estimates adjusted to a 2023 benchmark. Based on the North American Industry Classification System (NAICS), 2022.

<b><u>DOTHAN MSA</u></b>	<b>Mar p 2024</b>	<b>Feb r 2024</b>	<b>Mar r 2023</b>	<b>Net Change From :</b>	
				<b>Feb r 2024</b>	<b>Mar r 2023</b>
<b>TOTAL NONAGRICULTURAL EMPLOYMENT</b>	<b>63,700</b>	<b>63,400</b>	<b>62,600</b>	<b>300</b>	<b>1,100</b>
<b>GOODS PRODUCING</b>	<b>8,300</b>	<b>8,200</b>	<b>8,100</b>	<b>100</b>	<b>200</b>
Mining, Logging, and Construction	2,800	2,800	2,700	0	100
Manufacturing	5,500	5,400	5,400	100	100
<b>SERVICE PROVIDING</b>	<b>55,400</b>	<b>55,200</b>	<b>54,500</b>	<b>200</b>	<b>900</b>
Trade, Transportation, and Utilities	16,600	16,600	16,100	0	500
Wholesale Trade	3,300	3,300	3,300	0	0
Retail Trade	9,800	9,800	9,200	0	600
Transportation, Warehousing and Utilities	3,500	3,500	3,600	0	-100
Information	400	400	400	0	0
Financial Activities	2,200	2,300	2,200	-100	0
Professional and Business Services	5,800	5,800	6,200	0	-400
Private Education and Health Services	9,900	9,900	9,500	0	400
Leisure and Hospitality	6,400	6,300	6,600	100	-200
Other Services	3,100	3,000	3,000	100	100
Government	11,000	10,900	10,500	100	500
Federal	400	400	400	0	0
State and Local	10,600	10,500	10,100	100	500

<sup>1</sup> Place of work basis. p Preliminary. r Revised.

NOTE: Estimates prepared by the U.S. Department of Labor, Bureau of Labor Statistics.

Estimates adjusted to a 2023 benchmark. Based on the North American Industry Classification System (NAICS), 2022.

**NONAGRICULTURAL WAGE AND SALARY EMPLOYMENT  
FOR ALABAMA METROPOLITAN STATISTICAL AREAS (MSA'S)<sup>1/</sup>**

<b><u>FLORENCE - MUSCLE SHOALS MSA</u></b>	<b>Mar p 2024</b>	<b>Feb r 2024</b>	<b>Mar r 2023</b>	<b>Net Change From :</b>	
				<b>Feb r 2024</b>	<b>Mar r 2023</b>
<b>TOTAL NONAGRICULTURAL EMPLOYMENT</b>	<b>59,400</b>	<b>58,900</b>	<b>58,900</b>	<b>500</b>	<b>500</b>
<b>GOODS PRODUCING</b>	<b>13,000</b>	<b>12,800</b>	<b>12,600</b>	<b>200</b>	<b>400</b>
Mining, Logging, and Construction	4,200	4,100	4,000	100	200
Manufacturing	8,800	8,700	8,600	100	200
<b>SERVICE PROVIDING</b>	<b>46,400</b>	<b>46,100</b>	<b>46,300</b>	<b>300</b>	<b>100</b>
Trade, Transportation, and Utilities	11,700	11,700	11,700	0	0
Wholesale Trade	2,300	2,300	2,200	0	100
Retail Trade	8,200	8,200	8,200	0	0
Transportation, Warehousing and Utilities	1,200	1,200	1,300	0	-100
Information	500	500	500	0	0
Financial Activities	2,500	2,500	2,500	0	0
Professional and Business Services	3,600	3,600	3,700	0	-100
Private Education and Health Services	8,100	8,200	7,800	-100	300
Leisure and Hospitality	6,700	6,600	6,600	100	100
Other Services	2,500	2,500	2,500	0	0
Government	10,800	10,500	11,000	300	-200
Federal	1,000	1,000	1,000	0	0
State and Local	9,800	9,500	10,000	300	-200

<sup>1</sup> Place of work basis. p Preliminary. r Revised.

NOTE: Estimates prepared by the U.S. Department of Labor, Bureau of Labor Statistics.

Estimates adjusted to a 2023 benchmark. Based on the North American Industry Classification System (NAICS), 2022.

<b><u>GADSDEN MSA</u></b>	<b>Mar p 2024</b>	<b>Feb r 2024</b>	<b>Mar r 2023</b>	<b>Net Change From :</b>	
				<b>Feb r 2024</b>	<b>Mar r 2023</b>
<b>TOTAL NONAGRICULTURAL EMPLOYMENT</b>	<b>34,900</b>	<b>34,900</b>	<b>34,700</b>	<b>0</b>	<b>200</b>
<b>GOODS PRODUCING</b>	<b>5,700</b>	<b>5,600</b>	<b>5,600</b>	<b>100</b>	<b>100</b>
Mining, Logging, and Construction	1,100	1,100	1,100	0	0
Manufacturing	4,600	4,500	4,500	100	100
<b>SERVICE PROVIDING</b>	<b>29,200</b>	<b>29,300</b>	<b>29,100</b>	<b>-100</b>	<b>100</b>
Trade, Transportation, and Utilities	6,900	7,000	6,900	-100	0
Wholesale Trade	1,100	1,100	1,100	0	0
Retail Trade	4,700	4,800	4,600	-100	100
Transportation, Warehousing and Utilities	1,100	1,100	1,200	0	-100
Information	200	200	200	0	0
Financial Activities	1,300	1,300	1,300	0	0
Professional and Business Services	2,700	2,700	2,700	0	0
Private Education and Health Services	7,300	7,400	7,200	-100	100
Leisure and Hospitality	3,800	3,700	4,000	100	-200
Other Services	1,700	1,700	1,600	0	100
Government	5,300	5,300	5,200	0	100
Federal	300	300	300	0	0
State and Local	5,000	5,000	4,900	0	100

<sup>1</sup> Place of work basis. p Preliminary. r Revised.

NOTE: Estimates prepared by the U.S. Department of Labor, Bureau of Labor Statistics.

Estimates adjusted to a 2023 benchmark. Based on the North American Industry Classification System (NAICS), 2022.

**NONAGRICULTURAL WAGE AND SALARY EMPLOYMENT  
FOR ALABAMA METROPOLITAN STATISTICAL AREAS (MSA'S)<sup>1/</sup>**

<b><u>HUNTSVILLE MSA</u></b>	<b>Mar p 2024</b>	<b>Feb r 2024</b>	<b>Mar r 2023</b>	<b>Net Change From :</b>	
				<b>Feb r 2024</b>	<b>Mar r 2023</b>
<b>TOTAL NONAGRICULTURAL EMPLOYMENT</b>	<b>280,200</b>	<b>280,500</b>	<b>273,100</b>	<b>-300</b>	<b>7,100</b>
<b>GOODS PRODUCING</b>	<b>46,400</b>	<b>46,300</b>	<b>44,100</b>	<b>100</b>	<b>2,300</b>
Mining, Logging, and Construction	10,700	10,600	10,200	100	500
Manufacturing	35,700	35,700	33,900	0	1,800
Durable Goods	31,400	31,500	29,600	-100	1,800
Computer and Electronic Prod. Manufacturing	3,900	3,900	4,100	0	-200
Transportation Equipment Manufacturing	19,300	19,300	17,500	0	1,800
Nondurable Goods	4,300	4,200	4,300	100	0
<b>SERVICE PROVIDING</b>	<b>233,800</b>	<b>234,200</b>	<b>229,000</b>	<b>-400</b>	<b>4,800</b>
Trade, Transportation, and Utilities	39,000	39,400	40,200	-400	-1,200
Wholesale Trade	6,600	6,600	6,500	0	100
Retail Trade	26,500	26,900	26,900	-400	-400
General Merchandise Retailers	7,200	7,300	7,800	-100	-600
Transportation, Warehousing and Utilities	5,900	5,900	6,800	0	-900
Information	2,800	2,700	2,600	100	200
Financial Activities	8,900	9,000	8,500	-100	400
Professional and Business Services	68,700	69,100	66,500	-400	2,200
Professional, Scientific and Technical Services	50,900	51,200	49,400	-300	1,500
Private Education and Health Services	24,300	24,400	23,700	-100	600
Leisure and Hospitality	22,900	22,700	22,700	200	200
Food Services and Drinking Places	18,400	18,300	18,200	100	200
Other Services	9,400	9,400	9,200	0	200
Government	57,800	57,500	55,600	300	2,200
Federal	21,300	21,300	20,700	0	600
State	7,100	7,100	7,000	0	100
Local	29,400	29,100	27,900	300	1,500

<sup>1</sup> Place of work basis. p Preliminary. r Revised.

NOTE: Estimates prepared by the U.S. Department of Labor, Bureau of Labor Statistics.

Estimates adjusted to a 2023 benchmark. Based on the North American Industry Classification System (NAICS), 2022.

<b><u>MOBILE MSA</u></b>	<b>Mar p 2024</b>	<b>Feb r 2024</b>	<b>Mar r 2023</b>	<b>Net Change From :</b>	
				<b>Feb r 2024</b>	<b>Mar r 2023</b>
<b>TOTAL NONAGRICULTURAL EMPLOYMENT</b>	<b>188,500</b>	<b>188,400</b>	<b>188,000</b>	<b>100</b>	<b>500</b>
<b>GOODS PRODUCING</b>	<b>29,500</b>	<b>29,400</b>	<b>28,300</b>	<b>100</b>	<b>1,200</b>
Mining, Logging, and Construction	13,100	13,200	12,400	-100	700
Manufacturing	16,400	16,200	15,900	200	500
<b>SERVICE PROVIDING</b>	<b>159,000</b>	<b>159,000</b>	<b>159,700</b>	<b>0</b>	<b>-700</b>
Trade, Transportation, and Utilities	39,300	39,300	39,700	0	-400
Wholesale Trade	8,500	8,500	8,400	0	100
Retail Trade	19,400	19,400	19,600	0	-200
General Merchandise Retailers	5,000	4,900	4,900	100	100
Transportation, Warehousing and Utilities	11,400	11,400	11,700	0	-300
Information	2,300	2,300	2,300	0	0
Financial Activities	8,000	8,100	9,300	-100	-1,300
Professional and Business Services	23,200	23,500	23,600	-300	-400
Private Education and Health Services	31,000	31,000	29,800	0	1,200
Health Care and Social Assistance	27,100	27,200	26,100	-100	1,000
Leisure and Hospitality	16,900	16,800	17,400	100	-500
Food Services and Drinking Places	13,700	13,600	14,300	100	-600
Other Services	12,500	12,300	12,200	200	300
Government	25,800	25,700	25,400	100	400
Federal	2,900	2,900	2,800	0	100
State	8,000	7,900	7,900	100	100
Local	14,900	14,900	14,700	0	200

<sup>1</sup> Place of work basis. p Preliminary. r Revised.

NOTE: Estimates prepared by the U.S. Department of Labor, Bureau of Labor Statistics.

Estimates adjusted to a 2023 benchmark. Based on the North American Industry Classification System (NAICS), 2022.

**NONAGRICULTURAL WAGE AND SALARY EMPLOYMENT  
FOR ALABAMA METROPOLITAN STATISTICAL AREAS (MSA'S)1/**

<b><u>MONTGOMERY MSA</u></b>	<b>Mar p 2024</b>	<b>Feb r 2024</b>	<b>Mar r 2023</b>	<b>Net Change From :</b>	
				<b>Feb r 2024</b>	<b>Mar r 2023</b>
<b>TOTAL NONAGRICULTURAL EMPLOYMENT</b>	<b>183,700</b>	<b>183,300</b>	<b>181,500</b>	<b>400</b>	<b>2,200</b>
<b>GOODS PRODUCING</b>	<b>27,800</b>	<b>27,600</b>	<b>26,400</b>	<b>200</b>	<b>1,400</b>
Mining, Logging, and Construction	7,800	7,800	7,200	0	600
Manufacturing	20,000	19,800	19,200	200	800
<b>SERVICE PROVIDING</b>	<b>155,900</b>	<b>155,700</b>	<b>155,100</b>	<b>200</b>	<b>800</b>
Trade, Transportation, and Utilities	30,100	30,200	30,300	-100	-200
Wholesale Trade	6,200	6,200	6,100	0	100
Retail Trade	17,500	17,600	17,600	-100	-100
General Merchandise Retailers	4,800	4,800	4,600	0	200
Transportation, Warehousing and Utilities	6,400	6,400	6,600	0	-200
Information	1,900	1,900	1,800	0	100
Financial Activities	9,100	9,100	8,900	0	200
Finance and Insurance	6,600	6,600	6,500	0	100
Professional and Business Services	21,300	21,300	21,900	0	-600
Private Education and Health Services	21,100	21,100	20,800	0	300
Health Care and Social Assistance	16,400	16,400	16,000	0	400
Leisure and Hospitality	16,600	16,500	16,800	100	-200
Food Services and Drinking Places	12,700	12,700	13,000	0	-300
Other Services	10,200	10,200	9,900	0	300
Government	45,600	45,400	44,700	200	900
Federal	7,800	7,800	7,500	0	300
State	24,100	24,000	23,800	100	300
Local	13,700	13,600	13,400	100	300

1 Place of work basis. p Preliminary. r Revised.

NOTE: Estimates prepared by the U.S. Department of Labor, Bureau of Labor Statistics.

Estimates adjusted to a 2023 benchmark. Based on the North American Industry Classification System (NAICS), 2022.

<b><u>TUSCALOOSA MSA</u></b>	<b>Mar p 2024</b>	<b>Feb r 2024</b>	<b>Mar r 2023</b>	<b>Net Change From :</b>	
				<b>Feb r 2024</b>	<b>Mar r 2023</b>
<b>TOTAL NONAGRICULTURAL EMPLOYMENT</b>	<b>115,900</b>	<b>115,900</b>	<b>114,100</b>	<b>0</b>	<b>1,800</b>
<b>GOODS PRODUCING</b>	<b>26,400</b>	<b>26,300</b>	<b>26,100</b>	<b>100</b>	<b>300</b>
Mining, Logging, and Construction	6,900	6,900	6,600	0	300
Manufacturing	19,500	19,400	19,500	100	0
<b>SERVICE PROVIDING</b>	<b>89,500</b>	<b>89,600</b>	<b>88,000</b>	<b>-100</b>	<b>1,500</b>
Trade, Transportation, and Utilities	17,300	17,400	17,100	-100	200
Wholesale Trade	2,300	2,300	2,200	0	100
Retail Trade	11,300	11,400	11,200	-100	100
Transportation, Warehousing and Utilities	3,700	3,700	3,700	0	0
Information	1,000	1,000	900	0	100
Financial Activities	4,000	4,100	4,000	-100	0
Professional and Business Services	10,700	10,800	10,900	-100	-200
Private Education and Health Services	10,100	10,200	9,900	-100	200
Leisure and Hospitality	11,700	11,600	11,600	100	100
Other Services	4,900	4,900	4,700	0	200
Government	29,800	29,600	28,900	200	900
Federal	2,200	2,200	2,200	0	0
State and Local	27,600	27,400	26,700	200	900

1 Place of work basis. p Preliminary. r Revised.

NOTE: Estimates prepared by the U.S. Department of Labor, Bureau of Labor Statistics.

Estimates adjusted to a 2023 benchmark. Based on the North American Industry Classification System (NAICS), 2022.

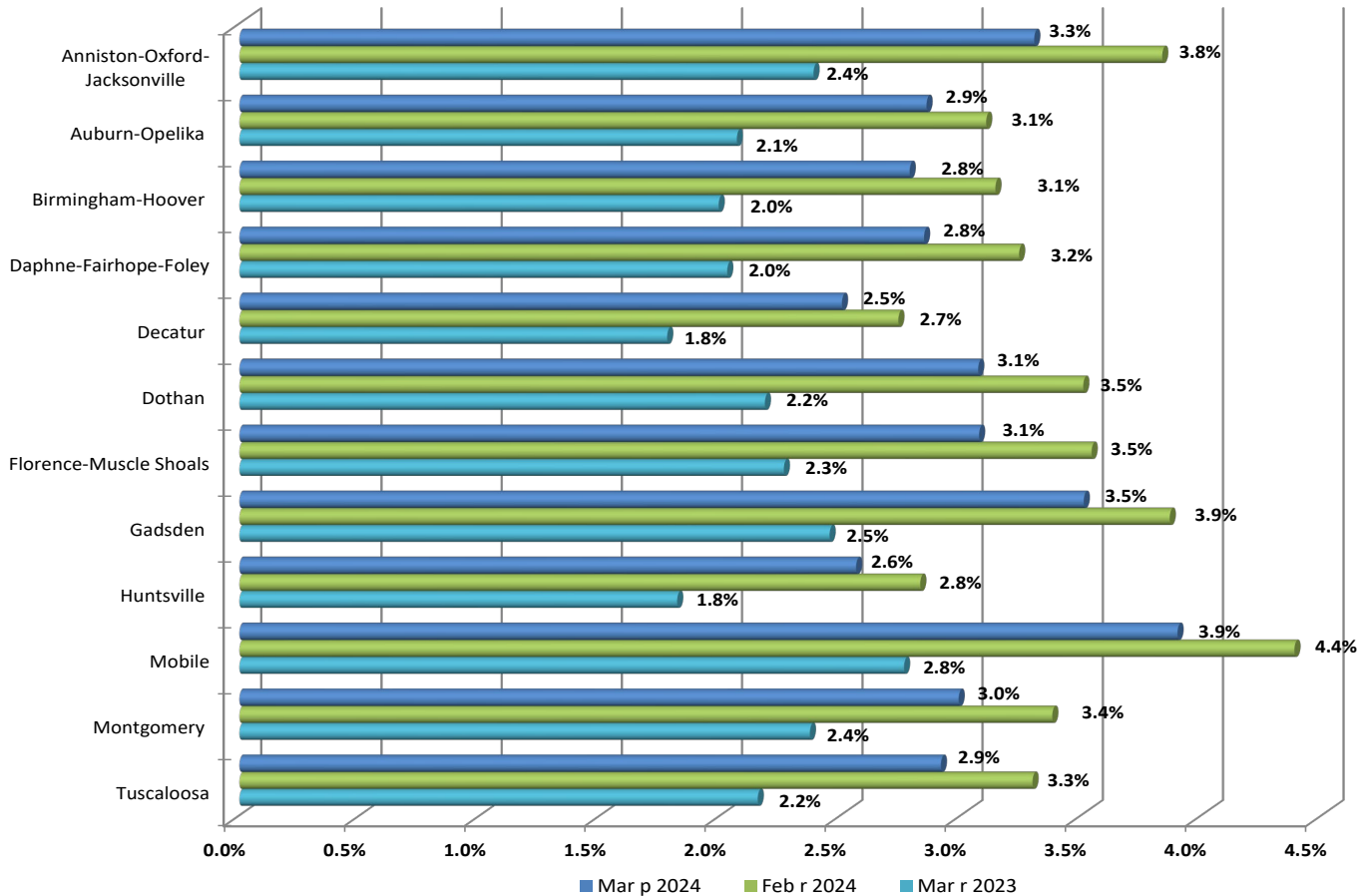
### ALABAMA, U.S., & COUNTY AREA CIVILIAN LABOR FORCE DATA

Area	Civilian Labor Force			Employment			Unemployment			Unemployment Rate		
	Mar p 2024	Feb r 2024	Mar r 2023	Mar p 2024	Feb r 2024	Mar r 2023	Mar p 2024	Feb r 2024	Mar r 2023	Mar p 2024	Feb r 2024	Mar r 2023
Alabama (Seasonally Adjusted)	2,331,680	2,327,989	2,291,783	2,260,786	2,258,932	2,239,451	70,894	69,057	52,332	3.0%	3.0%	2.3%
Alabama (Not Seasonally Adjusted)	2,343,059	2,316,439	2,292,002	2,272,173	2,237,458	2,241,553	70,886	78,981	50,449	3.0%	3.4%	2.2%
Autauga	27,386	27,098	26,857	26,681	26,297	26,334	705	801	523	2.6%	3.0%	1.9%
Baldwin	105,462	104,049	102,867	102,459	100,675	100,780	3,003	3,374	2,087	2.8%	3.2%	2.0%
Barbour	7,785	7,791	7,864	7,406	7,336	7,547	379	455	317	4.9%	5.8%	4.0%
Bibb	8,916	8,807	8,688	8,645	8,504	8,516	271	303	172	3.0%	3.4%	2.0%
Blount	26,129	25,846	25,477	25,417	25,047	25,006	712	799	471	2.7%	3.1%	1.8%
Bullock	4,435	4,434	4,203	4,308	4,275	4,109	127	159	94	2.9%	3.6%	2.2%
Butler	9,060	8,953	8,942	8,738	8,585	8,705	322	368	237	3.6%	4.1%	2.7%
Calhoun	46,254	45,833	45,443	44,725	44,074	44,358	1,529	1,759	1,085	3.3%	3.8%	2.4%
Chambers	16,742	16,575	16,132	16,259	16,031	15,824	483	544	308	2.9%	3.3%	1.9%
Cherokee	12,026	11,889	11,718	11,691	11,523	11,460	335	366	258	2.8%	3.1%	2.2%
Chilton	20,505	20,237	19,998	19,937	19,633	19,619	568	604	379	2.8%	3.0%	1.9%
Choclaw	4,292	4,241	4,130	4,101	4,034	3,986	191	207	144	4.5%	4.9%	3.5%
Clarke	7,627	7,583	7,580	7,203	7,094	7,226	424	489	354	5.6%	6.4%	4.7%
Clay	5,970	5,909	5,857	5,792	5,712	5,726	178	197	131	3.0%	3.3%	2.2%
Cleburne	6,265	6,224	6,026	6,089	6,019	5,900	176	205	126	2.8%	3.3%	2.1%
Coffee	21,892	21,663	21,388	21,168	20,907	20,929	724	756	459	3.3%	3.5%	2.1%
Colbert	24,355	24,007	23,928	23,554	23,085	23,335	801	922	593	3.3%	3.8%	2.5%
Conecuh	4,221	4,206	4,139	4,052	4,011	4,016	169	195	123	4.0%	4.6%	3.0%
Coosa	4,549	4,484	4,540	4,397	4,325	4,440	152	159	100	3.3%	3.5%	2.2%
Covington	14,694	14,567	14,580	14,175	13,994	14,215	519	573	365	3.5%	3.9%	2.5%
Crenshaw	6,119	6,046	5,887	5,920	5,837	5,751	199	209	136	3.3%	3.5%	2.3%
Cullman	40,031	39,483	39,344	39,014	38,340	38,666	1,017	1,143	678	2.5%	2.9%	1.7%
Dale	21,398	21,184	20,992	20,722	20,428	20,538	676	756	454	3.2%	3.6%	2.2%
Dallas	13,501	13,418	13,374	12,713	12,503	12,754	788	915	620	5.8%	6.8%	4.6%
DeKalb	31,226	30,988	30,224	30,360	30,020	29,603	866	968	621	2.8%	3.1%	2.1%
Elmore	39,250	38,803	38,473	38,244	37,679	37,763	1,006	1,124	710	2.6%	2.9%	1.8%
Escambia	14,708	14,492	14,249	14,170	13,917	13,843	538	575	406	3.7%	4.0%	2.8%
Etowah	40,038	39,622	39,437	38,632	38,089	38,469	1,406	1,533	968	3.5%	3.9%	2.5%
Fayette	6,582	6,497	6,601	6,341	6,230	6,454	241	267	147	3.7%	4.1%	2.2%
Franklin	14,294	14,091	14,376	13,892	13,639	14,058	402	452	318	2.8%	3.2%	2.2%
Geneva	11,176	11,109	10,848	10,833	10,738	10,617	343	371	231	3.1%	3.3%	2.1%
Greene	2,911	2,894	2,747	2,739	2,706	2,610	172	188	137	5.9%	6.5%	5.0%
Hale	5,932	5,893	5,761	5,701	5,635	5,585	231	258	176	3.9%	4.4%	3.1%
Henry	7,130	7,075	6,904	6,882	6,810	6,757	248	265	147	3.5%	3.7%	2.1%
Houston	49,096	48,689	47,912	47,616	46,978	46,855	1,480	1,711	1,057	3.0%	3.5%	2.2%
Jackson	23,650	23,387	22,998	22,938	22,576	22,495	712	811	503	3.0%	3.5%	2.2%
Jefferson	331,661	327,366	324,255	321,910	316,434	317,284	9,751	10,932	6,971	2.9%	3.3%	2.1%
Lamar	5,835	5,767	5,699	5,644	5,558	5,566	191	209	133	3.3%	3.6%	2.3%
Lauderdale	43,813	43,170	43,022	42,517	41,711	42,099	1,296	1,459	923	3.0%	3.4%	2.1%
Lawrence	15,072	14,944	14,749	14,670	14,489	14,466	402	455	283	2.7%	3.0%	1.9%
Lee	83,668	82,685	80,531	81,277	80,117	78,865	2,391	2,568	1,666	2.9%	3.1%	2.1%
Limestone	51,008	50,500	49,338	49,686	49,070	48,434	1,322	1,430	904	2.6%	2.8%	1.8%
Lowndes	3,522	3,505	3,448	3,353	3,305	3,306	169	200	142	4.8%	5.7%	4.1%
Macon	8,098	8,010	7,947	7,801	7,687	7,705	297	323	242	3.7%	4.0%	3.0%
Madison	211,263	209,102	204,486	205,858	203,181	200,769	5,405	5,921	3,717	2.6%	2.8%	1.8%
Marengo	7,606	7,539	7,431	7,331	7,221	7,205	275	318	226	3.6%	4.2%	3.0%
Marion	13,226	13,077	13,644	12,796	12,603	13,301	430	474	343	3.3%	3.6%	2.5%
Marshall	46,852	46,328	45,815	45,672	44,983	44,977	1,180	1,345	838	2.5%	2.9%	1.8%
Mobile	192,294	190,423	189,600	184,792	182,069	184,359	7,502	8,354	5,241	3.9%	4.4%	2.8%
Monroe	7,105	7,021	6,890	6,741	6,617	6,618	364	404	272	5.1%	5.8%	3.9%
Montgomery	110,006	108,721	108,035	106,497	104,824	105,215	3,509	3,897	2,820	3.2%	3.6%	2.6%
Morgan	62,900	62,156	61,646	61,348	60,498	60,570	1,552	1,658	1,076	2.5%	2.7%	1.7%
Perry	2,919	2,908	2,880	2,745	2,715	2,749	174	193	131	6.0%	6.6%	4.5%
Pickens	7,876	7,815	7,672	7,596	7,490	7,460	280	325	212	3.6%	4.2%	2.8%
Pike	16,388	16,218	16,027	15,861	15,628	15,643	527	590	384	3.2%	3.6%	2.4%
Randolph	9,655	9,610	9,416	9,371	9,275	9,208	284	335	208	2.9%	3.5%	2.2%
Russell	24,021	23,745	23,513	23,187	22,823	22,985	834	922	528	3.5%	3.9%	2.2%
Shelby	124,589	122,830	121,874	121,683	119,639	119,919	2,906	3,191	1,955	2.3%	2.6%	1.6%
St. Clair	43,199	42,649	42,191	42,047	41,364	41,420	1,152	1,285	771	2.7%	3.0%	1.8%
Sumter	4,556	4,517	4,457	4,357	4,281	4,323	199	236	134	4.4%	5.2%	3.0%
Talladega	36,929	36,546	36,745	35,760	35,208	35,836	1,169	1,338	909	3.2%	3.7%	2.5%
Tallapoosa	17,355	17,058	17,457	16,828	16,502	17,076	527	556	381	3.0%	3.3%	2.2%
Tuscaloosa	108,530	107,132	106,020	105,472	103,729	103,833	3,058	3,403	2,187	2.8%	3.2%	2.1%
Walker	26,101	25,794	25,474	25,262	24,875	24,873	839	919	601	3.2%	3.6%	2.4%
Washington	9,124	9,034	9,166	8,842	8,697	8,972	282	337	194	3.1%	3.7%	2.1%
Wilcox	2,476	2,509	2,491	2,258	2,244	2,301	218	265	190	8.8%	10.6%	7.6%
Winston	9,807	9,697	9,597	9,498	9,338	9,366	309	359	231	3.2%	3.7%	2.4%
United States (Seasonally Adjusted)	167,895,000	167,426,000	166,690,000	161,466,000	160,968,000	160,824,000	6,429,000	6,458,000	5,866,000	3.8%	3.9%	3.5%
United States (Not Seasonally Adj.)	167,960,000	167,285,000	166,783,000	161,356,000	160,315,000	160,741,000	6,604,000	6,970,000	6,043,000	3.9%	4.2%	3.6%

Counties and Metropolitan Areas are comparable to the not seasonally adjusted labor force data.

Estimates prepared by the Alabama Department of Labor in cooperation with the Bureau of Labor Statistics, based on a 2023 benchmark.

## ALABAMA METROPOLITAN STATISTICAL AREA UNEMPLOYMENT RATES

METROPOLITAN STATISTICAL AREAS  
CIVILIAN LABOR FORCE DATA

Area	Civilian Labor Force			Employment			Unemployment			Unemployment Rate		
	Mar p 2024	Feb r 2024	Mar r 2023	Mar p 2024	Feb r 2024	Mar r 2023	Mar p 2024	Feb r 2024	Mar r 2023	Mar p 2024	Feb r 2024	Mar r 2023
Anniston-Oxford-Jacksonville MA	46,254	45,833	45,443	44,725	44,074	44,358	1,529	1,759	1,085	3.3%	3.8%	2.4%
Auburn-Opelika MA	83,668	82,685	80,531	81,277	80,117	78,865	2,391	2,568	1,666	2.9%	3.1%	2.1%
Birmingham-Hoover MA	581,100	573,529	567,957	564,901	555,496	556,637	16,199	18,033	11,320	2.8%	3.1%	2.0%
Daphne-Fairhope-Foley MA	105,462	104,049	102,867	102,459	100,675	100,780	3,003	3,374	2,087	2.8%	3.2%	2.0%
Decatur MA	77,972	77,100	76,395	76,018	74,987	75,036	1,954	2,113	1,359	2.5%	2.7%	1.8%
Dothan MA	67,402	66,873	65,664	65,331	64,526	64,229	2,071	2,347	1,435	3.1%	3.5%	2.2%
Florence-Muscle Shoals MA	68,168	67,177	66,950	66,071	64,796	65,434	2,097	2,381	1,516	3.1%	3.5%	2.3%
Gadsden MA	40,038	39,622	39,437	38,632	38,089	38,469	1,406	1,533	968	3.5%	3.9%	2.5%
Huntsville MA	262,271	259,602	253,824	255,544	252,251	249,203	6,727	7,351	4,621	2.6%	2.8%	1.8%
Mobile MA	192,294	190,423	189,600	184,792	182,069	184,359	7,502	8,354	5,241	3.9%	4.4%	2.8%
Montgomery MA	180,164	178,127	176,813	174,775	172,105	172,618	5,389	6,022	4,195	3.0%	3.4%	2.4%
Tuscaloosa MA	122,338	120,840	119,453	118,769	116,854	116,878	3,569	3,986	2,575	2.9%	3.3%	2.2%

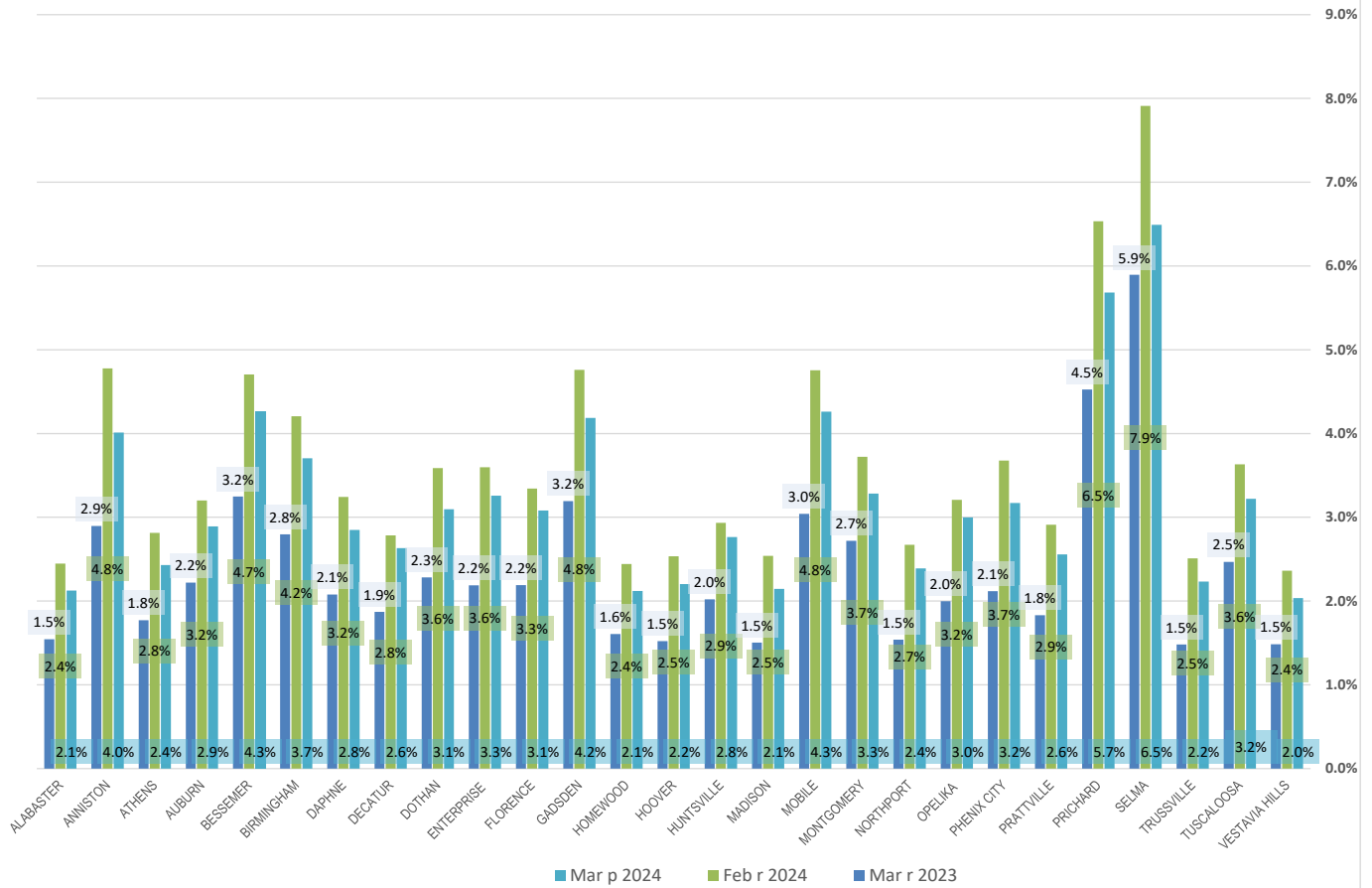
Counties and Metropolitan Areas are comparable to the not seasonally adjusted labor force data.

Estimates prepared by the Alabama Department of Labor in cooperation with the Bureau of Labor Statistics, based on a 2023 benchmark.

# AL LMI News

## Issue 03 March 2024 Data

SELECTED CITY UNEMPLOYMENT RATES



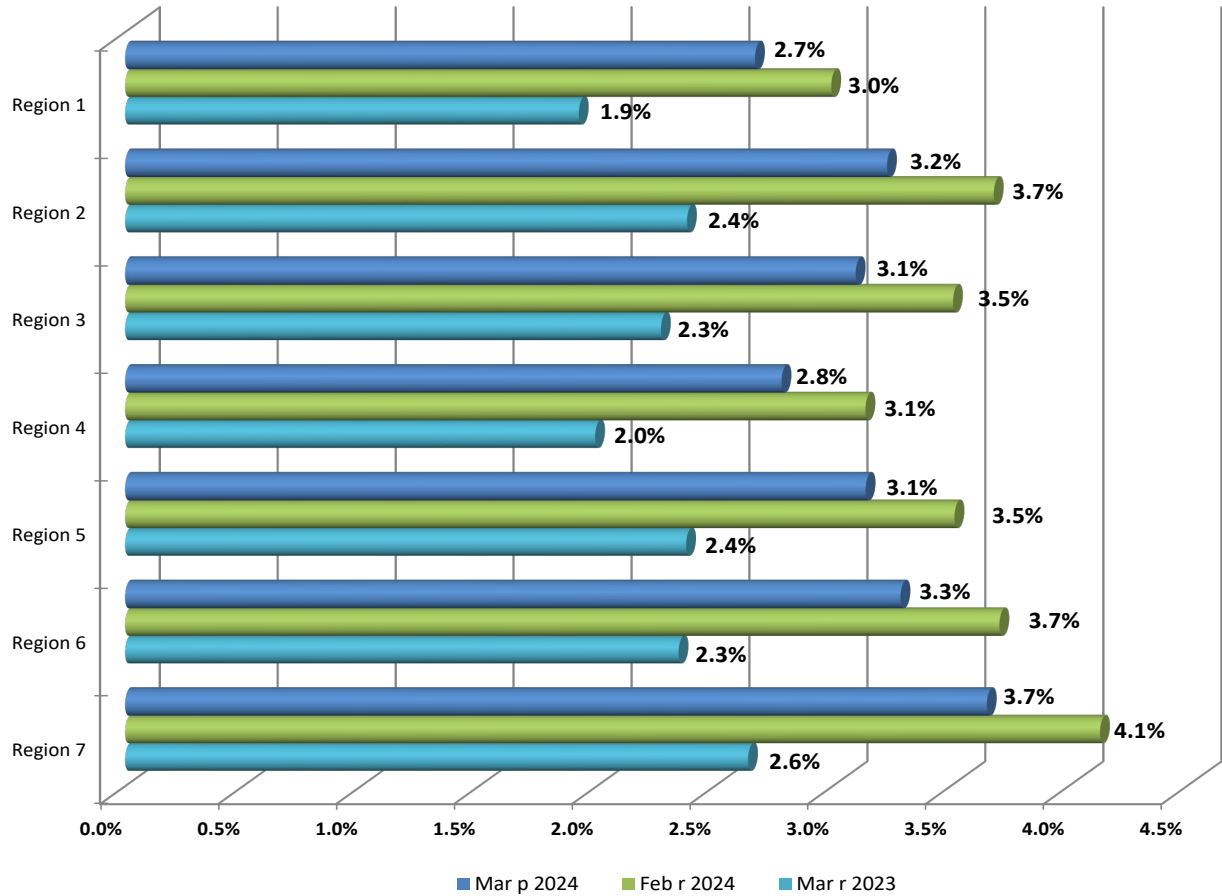
### CITY AREAS CIVILIAN LABOR FORCE DATA

Area	Civilian Labor Force			Employment			Unemployment			Unemployment Rate		
	Mar p 2024	Feb r 2024	Mar r 2023	Mar p 2024	Feb r 2024	Mar r 2023	Mar p 2024	Feb r 2024	Mar r 2023	Mar p 2024	Feb r 2024	Mar r 2023
ALABASTER CITY	19,434	19,170	19,039	19,021	18,701	18,745	413	469	294	2.1%	2.4%	1.5%
ANNISTON CITY	8,029	7,976	7,872	7,707	7,595	7,644	322	381	228	4.0%	4.8%	2.9%
ATHENS CITY	14,409	14,287	13,952	14,059	13,885	13,705	350	402	247	2.4%	2.8%	1.8%
AUBURN CITY	34,444	34,061	33,193	33,448	32,971	32,456	996	1,090	737	2.9%	3.2%	2.2%
BESSEMER CITY	10,200	10,073	9,948	9,765	9,599	9,625	435	474	323	4.3%	4.7%	3.2%
BIRMINGHAM CITY	96,257	95,114	93,987	92,690	91,113	91,358	3,567	4,001	2,629	3.7%	4.2%	2.8%
DAPHNE CITY	13,654	13,471	13,325	13,265	13,034	13,048	389	437	277	2.8%	3.2%	2.1%
DECATUR CITY	29,300	28,940	28,704	28,529	28,134	28,167	771	806	537	2.6%	2.8%	1.9%
DOTHAN CITY	31,917	31,649	31,151	30,929	30,514	30,440	988	1,135	711	3.1%	3.6%	2.3%
ENTERPRISE CITY	11,446	11,345	11,194	11,073	10,937	10,949	373	408	245	3.3%	3.6%	2.2%
FLORENCE CITY	19,309	18,995	18,945	18,714	18,360	18,530	595	635	415	3.1%	3.3%	2.2%
GADSDEN CITY	12,327	12,227	12,149	11,811	11,645	11,761	516	582	388	4.2%	4.8%	3.2%
HOMERWOOD CITY	14,860	14,655	14,570	14,545	14,297	14,336	315	358	234	2.1%	2.4%	1.6%
HOOVER CITY	48,497	47,838	47,466	47,429	46,625	46,744	1,068	1,213	722	2.2%	2.5%	1.5%
HUNTSVILLE CITY	112,298	111,030	108,689	109,194	107,774	106,494	3,104	3,256	2,195	2.8%	2.9%	2.0%
MADISON CITY	30,407	30,134	29,461	29,755	29,369	29,018	652	765	443	2.1%	2.5%	1.5%
MOBILE CITY	87,189	86,349	85,888	83,473	82,243	83,277	3,716	4,106	2,611	4.3%	4.8%	3.0%
MONTGOMERY CITY	95,340	94,270	93,647	92,210	90,761	91,100	3,130	3,509	2,547	3.3%	3.7%	2.7%
NORTHPORT CITY	14,387	14,189	14,040	14,043	13,810	13,824	344	379	216	2.4%	2.7%	1.5%
OPELIKA CITY	15,743	15,553	15,120	15,271	15,054	14,818	472	499	302	3.0%	3.2%	2.0%
PHENIX CITY	15,359	15,200	15,012	14,872	14,641	14,694	487	559	318	3.2%	3.7%	2.1%
PRATTVILLE CITY	18,295	18,097	17,923	17,827	17,570	17,595	468	527	328	2.6%	2.9%	1.8%
PRICHARD CITY	8,005	7,959	7,890	7,550	7,439	7,533	455	520	357	5.7%	6.5%	4.5%
SELMA CITY	5,531	5,524	5,514	5,172	5,087	5,189	359	437	325	6.5%	7.9%	5.9%
TRUSSVILLE CITY	12,491	12,313	12,217	12,212	12,004	12,036	279	309	181	2.2%	2.5%	1.5%
TUSCALOOSA CITY	50,222	49,603	49,060	48,604	47,801	47,849	1,618	1,802	1,211	3.2%	3.6%	2.5%
VESTAVIA HILLS CITY	18,960	18,700	18,583	18,574	18,258	18,307	386	442	276	2.0%	2.4%	1.5%

City Areas are comparable to the not seasonally adjusted labor force data.

Estimates prepared by the Alabama Department of Labor in cooperation with the Bureau of Labor Statistics, based on a 2023 benchmark.

### Alabama Workforce Regions Unemployment Rates



### WORKFORCE REGIONS CIVILIAN LABOR FORCE DATA

Area	Civilian Labor Force			Employment			Unemployment			Unemployment Rate		
	Mar p 2024	Feb r 2024	Mar r 2023	Mar p 2024	Feb r 2024	Mar r 2023	Mar p 2024	Feb r 2024	Mar r 2023	Mar p 2024	Feb r 2024	Mar r 2023
Region 1	587,497	580,930	573,167	571,803	563,533	562,139	15,694	17,397	11,028	2.7%	3.0%	1.9%
Region 2	157,137	155,633	154,642	152,060	149,900	150,957	5,077	5,733	3,685	3.2%	3.7%	2.4%
Region 3	158,744	156,861	155,076	153,826	151,354	151,552	4,918	5,507	3,524	3.1%	3.5%	2.3%
Region 4	572,184	564,722	559,269	556,256	546,992	548,121	15,928	17,730	11,148	2.8%	3.1%	2.0%
Region 5	355,452	351,444	347,390	344,290	339,083	339,125	11,162	12,361	8,265	3.1%	3.5%	2.4%
Region 6	164,738	163,295	161,344	159,321	157,241	157,557	5,417	6,054	3,787	3.3%	3.7%	2.3%
Region 7	347,309	343,558	341,112	334,618	329,358	332,101	12,691	14,200	9,011	3.7%	4.1%	2.6%

Areas are comparable to the not seasonally adjusted labor force data.

Estimates prepared by the Alabama Department of Labor in cooperation with the Bureau of Labor Statistics, based on a 2023 benchmark.

For information about the Workforce Region geography, please visit <http://www2.labor.alabama.gov/Information/WorkforceRegionsMap.pdf>.

## Alabama Counties Ranked in Descending Order

Current March 2024

2023 Annual Average

Rank	Area	Rate
1	Wilcox County, AL	8.8%
2	Perry County, AL	6.0%
3	Greene County, AL	5.9%
4	Dallas County, AL	5.8%
5	Clarke County, AL	5.6%
6	Monroe County, AL	5.1%
7	Barbour County, AL	4.9%
8	Lowndes County, AL	4.8%
9	Choctaw County, AL	4.5%
10	Sumter County, AL	4.4%
11	Conecuh County, AL	4.0%
12	Hale County, AL	3.9%
12	Mobile County, AL	3.9%
14	Escambia County, AL	3.7%
14	Fayette County, AL	3.7%
14	Macon County, AL	3.7%
17	Butler County, AL	3.6%
17	Marengo County, AL	3.6%
17	Pickens County, AL	3.6%
20	Covington County, AL	3.5%
20	Etowah County, AL	3.5%
20	Henry County, AL	3.5%
20	Russell County, AL	3.5%
24	Calhoun County, AL	3.3%
24	Coffee County, AL	3.3%
24	Colbert County, AL	3.3%
24	Coosa County, AL	3.3%
24	Crenshaw County, AL	3.3%
24	Lamar County, AL	3.3%
24	Marion County, AL	3.3%
31	Dale County, AL	3.2%
31	Montgomery County, AL	3.2%
31	Pike County, AL	3.2%
31	Talladega County, AL	3.2%
31	Walker County, AL	3.2%
31	Winston County, AL	3.2%
37	Geneva County, AL	3.1%
37	Washington County, AL	3.1%
39	Bibb County, AL	3.0%
39	Clay County, AL	3.0%
39	Houston County, AL	3.0%
39	Jackson County, AL	3.0%
39	Lauderdale County, AL	3.0%
39	Tallapoosa County, AL	3.0%
45	Bullock County, AL	2.9%
45	Chambers County, AL	2.9%
45	Jefferson County, AL	2.9%
45	Lee County, AL	2.9%
45	Randolph County, AL	2.9%
50	Baldwin County, AL	2.8%
50	Cherokee County, AL	2.8%
50	Chilton County, AL	2.8%
50	Cleburne County, AL	2.8%
50	DeKalb County, AL	2.8%
50	Franklin County, AL	2.8%
50	Tuscaloosa County, AL	2.8%
57	Blount County, AL	2.7%
57	Lawrence County, AL	2.7%
57	St. Clair County, AL	2.7%
60	Autauga County, AL	2.6%
60	Elmore County, AL	2.6%
60	Limestone County, AL	2.6%
60	Madison County, AL	2.6%
64	Cullman County, AL	2.5%
64	Marshall County, AL	2.5%
64	Morgan County, AL	2.5%
67	Shelby County, AL	2.3%

Rank	Area	Rate
1	Wilcox County, AL	8.0%
2	Dallas County, AL	5.4%
3	Clarke County, AL	5.0%
3	Perry County, AL	5.0%
5	Greene County, AL	4.8%
6	Lowndes County, AL	4.6%
7	Barbour County, AL	4.4%
8	Monroe County, AL	4.3%
9	Choctaw County, AL	4.0%
10	Sumter County, AL	3.7%
11	Conecuh County, AL	3.5%
12	Hale County, AL	3.3%
12	Marengo County, AL	3.3%
14	Macon County, AL	3.2%
15	Escambia County, AL	3.1%
15	Mobile County, AL	3.1%
17	Pickens County, AL	3.0%
18	Butler County, AL	2.9%
18	Colbert County, AL	2.9%
18	Fayette County, AL	2.9%
18	Marion County, AL	2.9%
22	Calhoun County, AL	2.8%
22	Etowah County, AL	2.8%
22	Lamar County, AL	2.8%
22	Montgomery County, AL	2.8%
22	Russell County, AL	2.8%
22	Talladega County, AL	2.8%
28	Covington County, AL	2.7%
28	Crenshaw County, AL	2.7%
28	Pike County, AL	2.7%
28	Winston County, AL	2.7%
32	Coosa County, AL	2.6%
32	Franklin County, AL	2.6%
32	Henry County, AL	2.6%
32	Houston County, AL	2.6%
32	Walker County, AL	2.6%
32	Washington County, AL	2.6%
38	Bibb County, AL	2.5%
38	Coffee County, AL	2.5%
38	Dale County, AL	2.5%
38	Jackson County, AL	2.5%
38	Jefferson County, AL	2.5%
38	Lauderdale County, AL	2.5%
38	Tallapoosa County, AL	2.5%
45	Bullock County, AL	2.4%
45	Chambers County, AL	2.4%
45	Cherokee County, AL	2.4%
45	Clay County, AL	2.4%
45	Geneva County, AL	2.4%
45	Randolph County, AL	2.4%
51	Baldwin County, AL	2.3%
51	Cleburne County, AL	2.3%
51	DeKalb County, AL	2.3%
51	Lawrence County, AL	2.3%
51	Lee County, AL	2.3%
51	Tuscaloosa County, AL	2.3%
57	Autauga County, AL	2.2%
57	Chilton County, AL	2.2%
59	Blount County, AL	2.1%
59	Elmore County, AL	2.1%
59	Limestone County, AL	2.1%
59	Marshall County, AL	2.1%
59	St. Clair County, AL	2.1%
64	Cullman County, AL	2.0%
64	Madison County, AL	2.0%
64	Morgan County, AL	2.0%
67	Shelby County, AL	1.8%

## Release Schedule

### Local Area Unemployment Statistics & Current Employment Statistics 2024 Publication Schedule

Reference Month	Publication Date
January	Monday, 3/11/2024, 8:00AM
February	Friday, 3/22/2024, 8:00AM
March	Friday, 4/19/2024, 8:00AM
April	Friday, 5/17/2024, 8:00AM
May	Friday, 6/21/2024, 8:00AM <i>Southeastern States Map available Tuesday, 6/25/2024</i>
June	Friday, 7/19/2024, 8:00AM
July	Friday, 8/16/2024, 8:00AM
August	Friday, 9/20/2024, 8:00AM
September	Friday, 10/18/2024, 8:00AM <i>Southeastern States Map available Tuesday, 10/22/2024</i>
October	Friday, 11/15/2024, 8:00AM <i>Southeastern States Map available Tuesday, 11/19/2024</i>
November	Friday, 12/20/2024, 8:00AM
December	Friday, 1/24/2025, 8:00AM <i>Southeastern States Map available Tuesday, 1/28/2025</i>



## Technical Support

Local Area Unemployment Statistics  
Labor Market Information Division  
Alabama Department of Labor  
649 Monroe St, Room 4427  
Montgomery, AL 36131-2280

334-956-7485 phone/fax

<http://www2.labor.alabama.gov/Laus/Default.aspx> website

An Equal Opportunity Employer / Program  
Auxiliary aids and services available upon request to individuals with disabilities.  
Dial 711 for TTY accessibility.